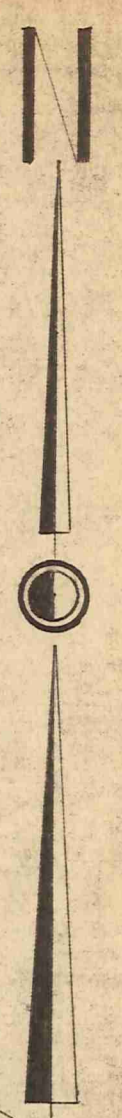
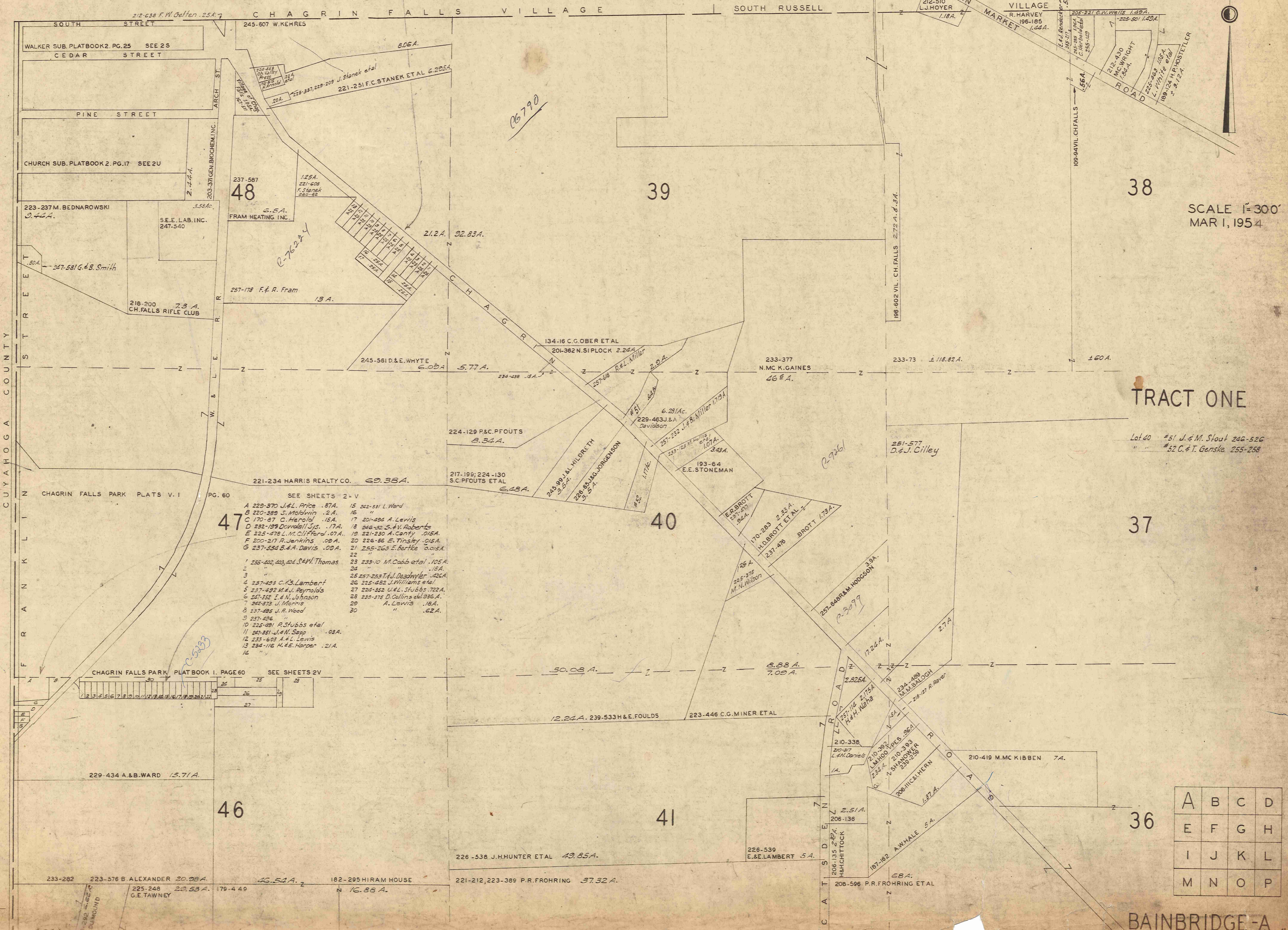


- 1. L. Geyer
- 2. 245-196 M. & O. Smith
- 3. 245-197 M. & O. Smith 1/2 245-275 7/32
- 4. 245-275 E. Merriman
- 5. 210-460 E. J. Miner
- 6. T. Remias
- 7. "
- 8. 210-61 D. L. Murray
- 9. "
- 10. 210-61 D. L. Murray
- 11. 245-584 J. & B. Korcykoski
- 12. 195-566 J. M. Korcykoski et al
- 13. "
- 14. 217-26 D. & E. Whyte
- 15. "
- 16. 217-142 T. Remias
- 17. "



SCALE 1"=300'
MAR 1, 1954



- SEE SHEETS 2-V
- | | |
|------------------------------------|-------------------------------------|
| A 229-370 J.L. Price .87A. | 15 242-331 L. Ward |
| B 220-389 S. Molwyn .2A. | 16 " " |
| C 170-87 C. Herold .15A. | 17 201-494 A. Lewis |
| D 232-199 Dowdell Sjs. .17A. | 18 246-32 S. V. Roberts |
| E 225-478 L. M. Clifford .07A. | 19 221-230 A. Centy .015A. |
| F 200-217 P. Jenkins .09A. | 20 226-86 E. Tinsley .015A. |
| G 237-554 B. & A. Davis .09A. | 21 255-263 E. Bertke .0015A. |
| 22 | 22 |
| 1 255-402, 403, 404 S. & M. Thomas | 23 233-10 M. Cobb et al. .105A. |
| 2 " " | 24 " .18A. |
| 3 " " | 25 257-253 T. J. Deadwyler .426A. |
| 4 237-493 C. S. Lambert | 26 225-482 J. Williams et al. |
| 5 237-492 M. & J. Reynolds | 27 224-352 U. & L. Stubbs .702A. |
| 6 247-352 E. & N. Johnson | 28 239-378 D. Collins et al. .336A. |
| 7 245-373 J. Morris | 29 " A. Lewis .18A. |
| 8 237-495 J. R. Wood | 30 " " .62A. |
| 9 237-496 | |
| 10 225-491 R. Stubbs et al. | |
| 11 247-351 J. & M. Sapp .03A. | |
| 12 233-603 A. & L. Lewis | |
| 13 234-116 H. & E. Harpen .21A. | |
| 14 " " | |

CHAGRIN FALLS PARK PLAT BOOK I, PAGE 60 SEE SHEETS 2V

1	2	3	4	5	6	7	8	9	10	11	12	13	14	15	16	17	18	19	20	21	22	23	24	25	26	27
---	---	---	---	---	---	---	---	---	----	----	----	----	----	----	----	----	----	----	----	----	----	----	----	----	----	----

TRACT ONE

Lot 40 #51 J. & M. Stout 246-526
" " #52 C. & T. Genske 255-258

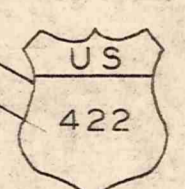
A	B	C	D
E	F	G	H
I	J	K	L
M	N	O	P

BAINBRIDGE-A



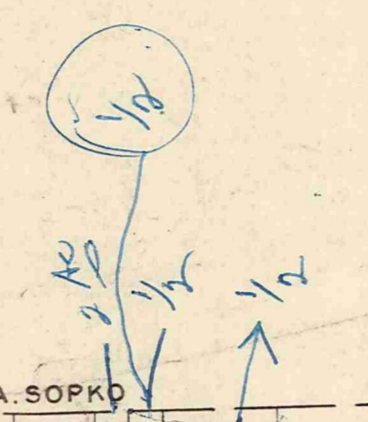
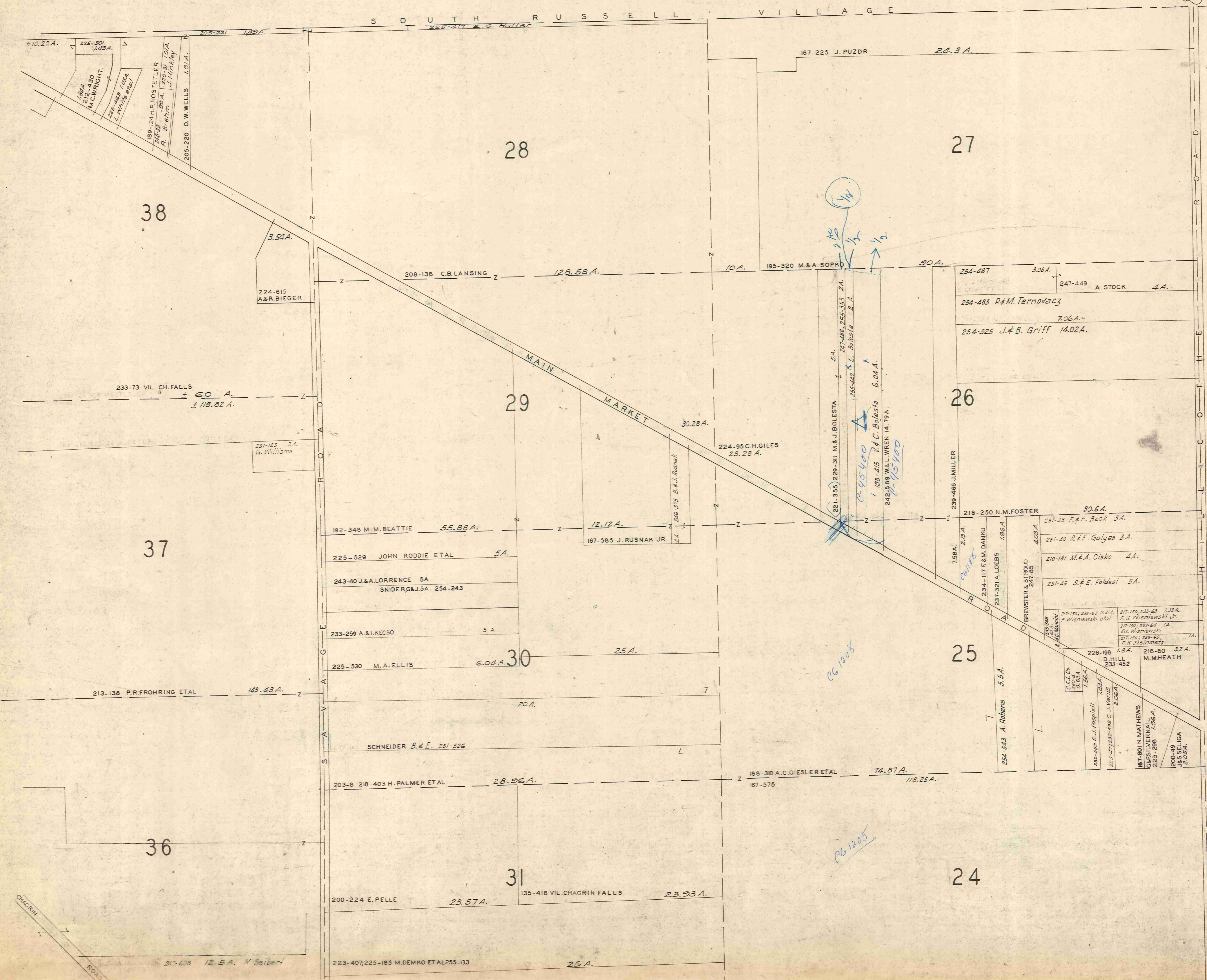
SCALE 1"=300'
MAR 1, 1954

TRACT ONE



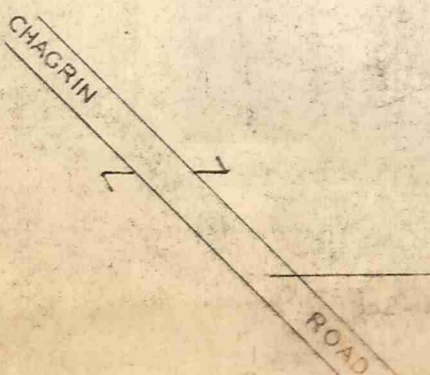
A	B	C	D
E	F	G	H
I	J	K	L
M	N	O	P

BAINBRIDGE-B



CG 1205

CG 1205

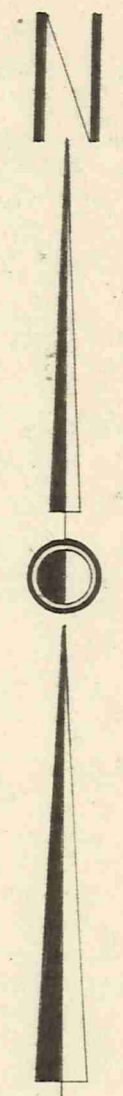


OHIO
306

SOUTH RUSSELL VILLAGE

ROAD

CHILLICOTHE

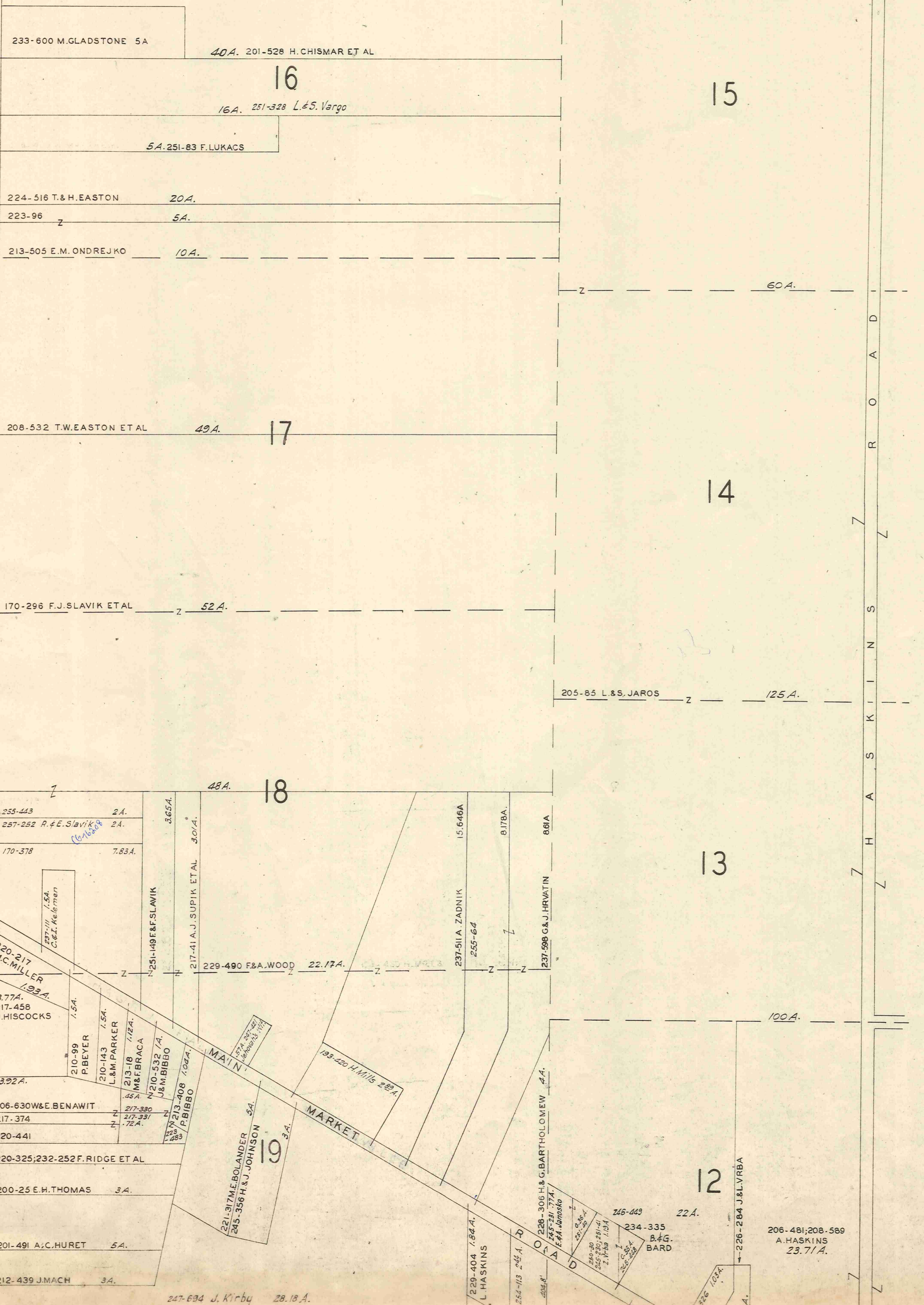


SCALE 1" = 300'
MAR. 1, 1954

TRACT ONE

A	B	C	D
E	F	G	H
I	J	K	L
M	N	O	P

BAINBRIDGE-C



US
422

233-600 M. GLADSTONE 5A

40A. 201-528 H. CHISMAR ET AL

16

16A. 251-328 L.S. VARGO

5A. 251-83 F. LUKACS

224-516 T. & H. EASTON

20A.

223-96

5A.

213-505 E.M. ONDREJKO

10A.

15

60A.

208-532 T.W. EASTON ET AL

49A.

17

14

170-296 F.J. SLAVIK ET AL

52A.

205-85 L. & S. JAROS

125A.

48A. 18

255-443 2A.

257-252 R. & E. SLAVIK 2A.

170-378 7.83A.

237-111 L.S.A. C. & E. KELEMEN

220-217 M.C. MILLER 1.93A.

377A. 217-458 J. HISCOCKS 1.5A.

210-99 P. BEYER 1.5A.

210-143 L. & M. PARKER 1.5A.

213-18 M. & F. BRACA 1.72A.

322A. 210-532 J.A. L. & M. BIBBO 1.5A.

206-630 W. & E. BENAWIT 217-320 1.72A.

217-374 217-331 1.72A.

220-441 217-331 1.72A.

220-325; 232-252 F. RIDGE ET AL

200-25 E.H. THOMAS 3A.

201-491 A.C. HURET 5A.

212-439 J. MACH 3A.

229-404 1.82A.

229-408 1.82A.

229-408 1.82A.

229-408 1.82A.

229-408 1.82A.

227-694 J. Kirby 28.18A.

231-149 F. SLAVIK

30A.

217-41 A.J. SUPIK ET AL

30A.

229-490 F. & A. WOOD

22.17A.

237-511 A. ZADNIK

255-64

8178A.

237-998 G. & J. HRVATIN

868A.

229-306 H. & G. BARTHOLOMEW

24A.

245-74 7A. F. & A. DOMESTO

245-74 7A.

245-74 7A.

245-74 7A.

245-74 7A.

245-74 7A.

245-74 7A.

245-74 7A.

245-74 7A.

245-74 7A.

15.646A

237-511 A. ZADNIK

255-64

8178A.

237-998 G. & J. HRVATIN

868A.

229-306 H. & G. BARTHOLOMEW

24A.

245-74 7A. F. & A. DOMESTO

245-74 7A.

245-74 7A.

245-74 7A.

245-74 7A.

245-74 7A.

245-74 7A.

245-74 7A.

245-74 7A.

245-74 7A.

231-149 F. SLAVIK

30A.

217-41 A.J. SUPIK ET AL

30A.

229-490 F. & A. WOOD

22.17A.

237-511 A. ZADNIK

255-64

8178A.

237-998 G. & J. HRVATIN

868A.

229-306 H. & G. BARTHOLOMEW

24A.

245-74 7A. F. & A. DOMESTO

245-74 7A.

245-74 7A.

245-74 7A.

245-74 7A.

15.646A

237-511 A. ZADNIK

255-64

8178A.

237-998 G. & J. HRVATIN

868A.

229-306 H. & G. BARTHOLOMEW

24A.

245-74 7A. F. & A. DOMESTO

245-74 7A.

245-74 7A.

245-74 7A.

245-74 7A.

245-74 7A.

245-74 7A.

245-74 7A.

245-74 7A.

245-74 7A.

231-149 F. SLAVIK

30A.

217-41 A.J. SUPIK ET AL

30A.

229-490 F. & A. WOOD

22.17A.

237-511 A. ZADNIK

255-64

8178A.

237-998 G. & J. HRVATIN

868A.

229-306 H. & G. BARTHOLOMEW

24A.

245-74 7A. F. & A. DOMESTO

245-74 7A.

245-74 7A.

245-74 7A.

245-74 7A.

15.646A

237-511 A. ZADNIK

255-64

8178A.

237-998 G. & J. HRVATIN

868A.

229-306 H. & G. BARTHOLOMEW

24A.

245-74 7A. F. & A. DOMESTO

245-74 7A.

245-74 7A.

245-74 7A.

245-74 7A.

245-74 7A.

245-74 7A.

245-74 7A.

245-74 7A.

245-74 7A.

15.646A

237-511 A. ZADNIK

255-64

8178A.

237-998 G. & J. HRVATIN

868A.

229-306 H. & G. BARTHOLOMEW

24A.

245-74 7A. F. & A. DOMESTO

245-74 7A.

245-74 7A.

245-74 7A.

245-74 7A.

245-74 7A.

245-74 7A.

245-74 7A.

245-74 7A.

245-74 7A.

15.646A

237-511 A. ZADNIK

255-64

8178A.

237-998 G. & J. HRVATIN

868A.

229-306 H. & G. BARTHOLOMEW

24A.

245-74 7A. F. & A. DOMESTO

245-74 7A.

245-74 7A.

245-74 7A.

245-74 7A.

245-74 7A.

245-74 7A.

245-74 7A.

245-74 7A.

245-74 7A.

15.646A

237-511 A. ZADNIK

255-64

8178A.

237-998 G. & J. HRVATIN

868A.

229-306 H. & G. BARTHOLOMEW

24A.

245-74 7A. F. & A. DOMESTO

245-74 7A.

245-74 7A.

245-74 7A.

245-74 7A.

245-74 7A.

245-74 7A.

245-74 7A.

245-74 7A.

245-74 7A.

15.646A

237-511 A. ZADNIK

255-64

8178A.

237-998 G. & J. HRVATIN

868A.

229-306 H. & G. BARTHOLOMEW

24A.

245-74 7A. F. & A. DOMESTO

245-74 7A.

245-74 7A.

245-74 7A.

245-74 7A.

245-74 7A.

245-74 7A.

245-74 7A.

245-74 7A.

245-74 7A.

15.646A

237-511 A. ZADNIK

255-64

8178A.

237-998 G. & J. HRVATIN

868A.

229-306 H. & G. BARTHOLOMEW

24A.

245-74 7A. F. & A. DOMESTO

245-74 7A.

245-74 7A.

245-74 7A.

245-74 7A.

245-74 7A.

245-74 7A.

245-74 7A.

245-74 7A.

245-74 7A.

15.646A

237-511 A. ZADNIK

255-64

8178A.

237-998 G. & J. HRVATIN

868A.

229-306 H. & G. BARTHOLOMEW

24A.

245-74 7A. F. & A. DOMESTO

245-74 7A.

245-74 7A.

245-74 7A.

245-74 7A.

245-74 7A.

SOUTH RUSSELL

VILLAGE

H.P. MALINOSKI 81A.

15

216-125 J. Rolland et al 57.70 A.

6

179-76 J. TAKAS ET AL 73A.

5

81.13 239-144 E&A. HAUSER

20681
205421

247-205 2.3A.
C. & W. Cerny

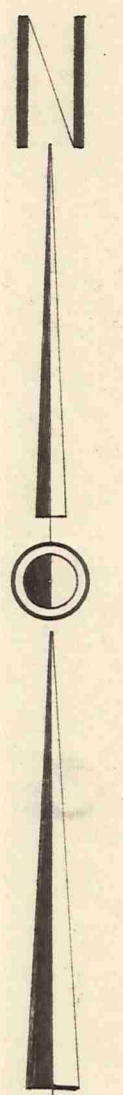
178-89 A. Ferencz 37.5A.

239-600 J. KOTULIK ET AL

54A.

237-132 B. Ferencz 12.5A.

SCALE 1"=300'
MAR 1, 1954



14

7

159-247 L.J. TAKACS 33.5A.
247-393 S. & A. Kotelas

4

255-424 C. & H. Moravec

136A.

205-85 L. & S. JAROS

125A.

206-529

77A.

16.5A.

13

8

100A.

38.47A.

10A.

10.09A.

180-439 V. YAHRAUS 10.09A.

3

177-424 F. & M. MAROUS

36.61A.

12

206-588 L. HASKINS

60.37A.

226-362 H. HUBERTY

226-361 M.M. DAVIS

189-527 A. HORWATH 10.09A.

243-223, 298

212-538 C. POST ET AL

50A.

206-1 G. H. CALVIN

24.53A.

9

2

242-516 E. & M. KOZELKA

24.5A.

213-513 E.T. PHILLIPS

260-12

32.31A.

32.31A.

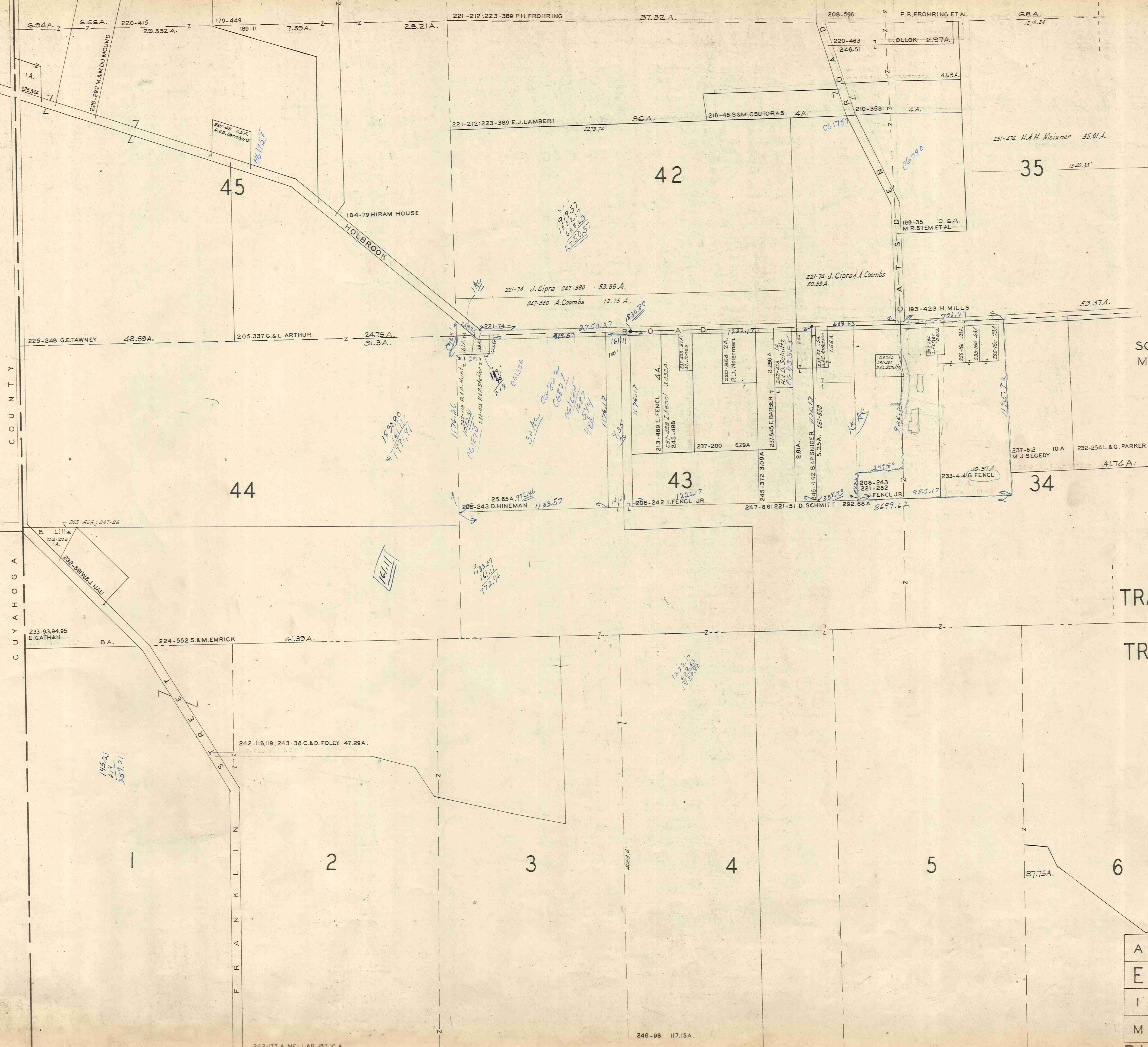
206-481, 206-589 A. HASKINS

212-538 E. B. POST ET AL

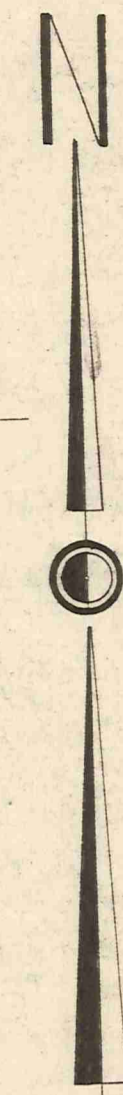
TRACT ONE

A	B	C	D
E	F	G	H
I	J	K	L
M	N	O	P

BAINBRIDGE - D



C O U N T Y
C U Y A H O G G A



SCALE 1" = 300'
MAR 1, 1954

TRACT ONE
TRACT TWO

A	B	C	D
E	F	G	H
I	J	K	L
M	N	O	P

RAINBRIDGE - E

212-445 P. PRUITT ET AL 107.41 A. 242-177 A. MELLAR 187.10 A. 246-98 117.15 A. 247-598

CG 1205

247-608 K. Seibert 12.5 A.
210-162 D. HILL 15.18 A. 233-453
208-487 I. JENKS 4.37 A.
1236.64'

218-560 A. DEMKO 255-133 25A.

167-575 A. C. GIESLER ETAL 118.25 A.

251-474 H. & H. Meixner 35.0 A.
1540.33'

237-285 C. E. SINCLAIR 32.27 A.

25A.

242-368 N. & M. LEWIN 4.11 A.

206-17 B. FIERY 19.04 A.

193-423 H. MILLS 59.37 A.

234-418 N. L. Norman
246-53 5.14 A
E. G. Croffy

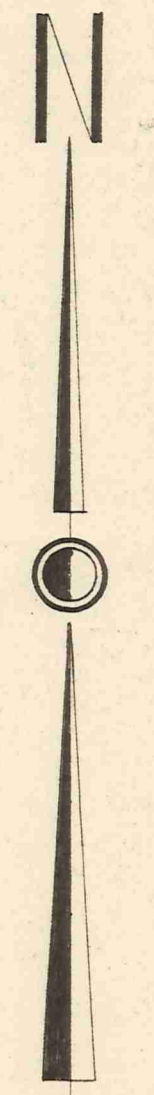
213-409 M. L. MONAGHAN 57.33 A.

225-534 LAKE LUCERNE LD. CO. 24.01 A.

200-56 H. T. SHELDON 4.46 A.

CG 1396
1388
3/4 9-10 Block C

SCALE 1"=300'
MAR 1, 1954



H O L B R O O K R O A D

C H A G R I N

C H I L L I C O T H E R O A D

224-133 232-254 L. & G. PARKER 51.18 A.

224-528 H. M. MILLS 7 A.

201-203 H. T. SHELDON 3.54 A.

25-535 R. A. WIERSEMAN

LAKE LUCERNE SUB. PLATBOOK 2 PG 21-24 SEE 2T

213-99, 407, 223-20 R. S. BECHK ETAL 25.76 A.

195-142 E. V. SIHLER 12.48 A.

195-165 J. CERVENKA et al 32.46 A. 247-269

TR. ONE
TR. TWO

221-180 E. R. DIEHM 31.7 A.

206-322 L. AKERS 36.35 A.

210-289 D. COBBLEDICK 30 A.

246-577 F. & M. TYSON 15.24 A.

243-250 1.253 A.

E. Black 34 Ac.

25.5 A.

229-408 R. J. LA RUE 17.90 A.

255-401 G. & I. Leibacher 12.51 A.
873.34'

248-265 4 A.

243-252 W. & L. STILLWELL 4.356 A.

234-327 V. & J. KENNEY

292-66A
221-51 D. P. SCHMITT

255-84 16 A.
R. Black

6.80 A.

7.67 A.

34-303 S. & H. STRUZYSKI

7-491 N. MATSKO ETAL 5.85 A.

1-182 H. E. OSBORNE 5 A.

19-428 J. R. Martin Ld. Co. L 16.28 Ac.

2-255-62 5 Ac.

2-255-62 5 Ac.

225-246 R. & E. PHILLIPS 7.5 A.

242-12 5 A.

218-26 R. N. SHIPPY ETAL 33.55 A.

218-26 R. N. SHIPPY ETAL 33.55 A.

170-454 ; 178-528
192-351 N. L. DAUBY ETAL

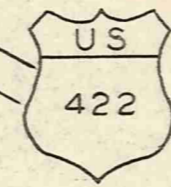
A	B	C	D
E	F	G	H
I	J	K	L
M	N	O	P

BAINBRIDGE - F

CG 1371

OHIO
306

CHILLICOTHE ROAD



#1. Lot 12 257-100 N.K. Anderson

20

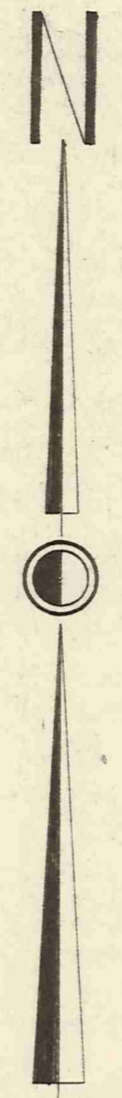
12

11

21

TRACT ONE
TRACT TWO

SCALE 1"=300'
MAR 1, 1954



239-146 M.G. READING

83.88 A.

CEM.

212-427,428 W.M. CHARMAN

70 A.

208-589 A.R. HASKINS

97.25 A.

257-532 J. & G. Maddox

47.315 A.

212-92 1.62 A.
W. BURNS ET AL

21.64 A.

179-131

58.35 A.

251-112 S. & L. CASTELLANO

20 A.

13

14

1376.84'

205-497 498 M. WAITE ET AL

43.306 A.

179-130 IVANHOE EUCLID REALTY CO

100 A.

BAINBRIDGE ROAD

200-269 I.A. STONEMAN

15.15 A.

226-50 F. & L. TUCEK

217-508 R. & R. BOSWORTH

C. & D. HAMILTON
243-331; 254-158 8 AC.

251-541 W. & J. FEDOR

A	B	C	D
E	F	G	H
I	J	K	L
M	N	O	P

BAINBRIDGE - G

206-481 208-589 A.HASKINS 40.3A.

9

2

206-482 L.HASKINS 5.01A.

243-223, 298
212-538 C. POST ET AL 118A.

296-97 E.&S. LEONARD 20.02A.

K I N S O R O A D

M A I N M A R K E T 12A.

11

10

232-267 W.CERMAK ET AL
234-217 C.L. GRASSEL
237-313 F.A.J. KUBISTA
245-389 A. CLEMENT 4.47A.
251-481 D.F.A. HAWCK
255-356 A.F.V. KAHNS 4.9A.
242-295 H.&H. CROMER 8A.
257-460 D. Nagy et al
208-295 E.J. MARSEY 6A.
E.B.M. MARSEY 239-478 6A.
212-447 T.T. ZUCK 31.95A.

208-588 L.W. HASKINS 98A.

173-313 J.A. HECKER ET AL

257-104 J.S.A. G.H. Lesnak
257-109 1A.
257-157 2A. A.F.V. OSisko
257-373 1A. G.F.D. Nagy
254-428 1A. M. J. KUBA
251-82 L. HENKE
251-828 S.A. Z. Sussner

224-317 H.E. STADLHOFFER
251-82 L. HENKE

220-348 H.F. BEYER 13.38A.

SCALE 1"=300'
MAR 1, 1954

TRACT ONE
TRACT TWO

#1. 256-110 E. Young .5Ac. Lot #1

H A S I N G T O W N S H I P

A U B U R N T O W N S H I P

210-249 G.&L. STONE 8A.

224-122 7.59A.

3A.
229-487 H.&E. MITCHELL
264-38 R. & M. Edstrom 28A
CG 556

208-232 C.R. HOWARD ET AL 14A.

259-24 P.&C. PFOOTS 5.86A

260-9 C. MINER 46A 67.03A.

14

15

259-30 L.&H. HOYER
257-587 D.F.J. Bachelor 5.923A

259-23 L.&E. RUMSEY 8.91A.

12.07A. 157-540 H.M. HURD 49.29A.

247-171 205-185 W. HOWARD 23.32A.

229-94 J.&I. HEIN 6.60A.
229-383 E.M. BERGANSKI 5A.
239-283 CHOUINN 3A.
251-52 W.F.I. Alein CG 414
239-284 J.&K. HEIN 3.79A.

247-524 204A L.F.E. Hatcher
CG 710
Sharon Brown
6-7-55
21-30 4/9 12/90

192-141 C.P. HOWARD 15.84A.

6.862A.
229-183 M.J. HASKINS

B A I N B R I D G E

220-52 L.E. HATCHER 2A

154-106 L. HURD 4.13A. 7.92A.

31.76A.

192-141 C.P. HOWARD 95.37A.

A	B	C	D
E	F	G	H
I	J	K	L
M	N	O	P

BAINBRIDGE - H

12 11A.
167-464 V. COLLINS ET AL

32-4044 M. CLAREN

21A.

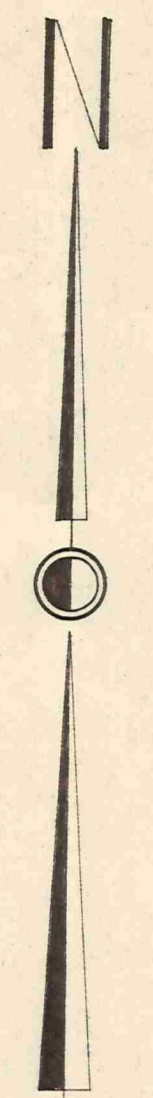
206-237 W.&L. GREENE 15.92A.

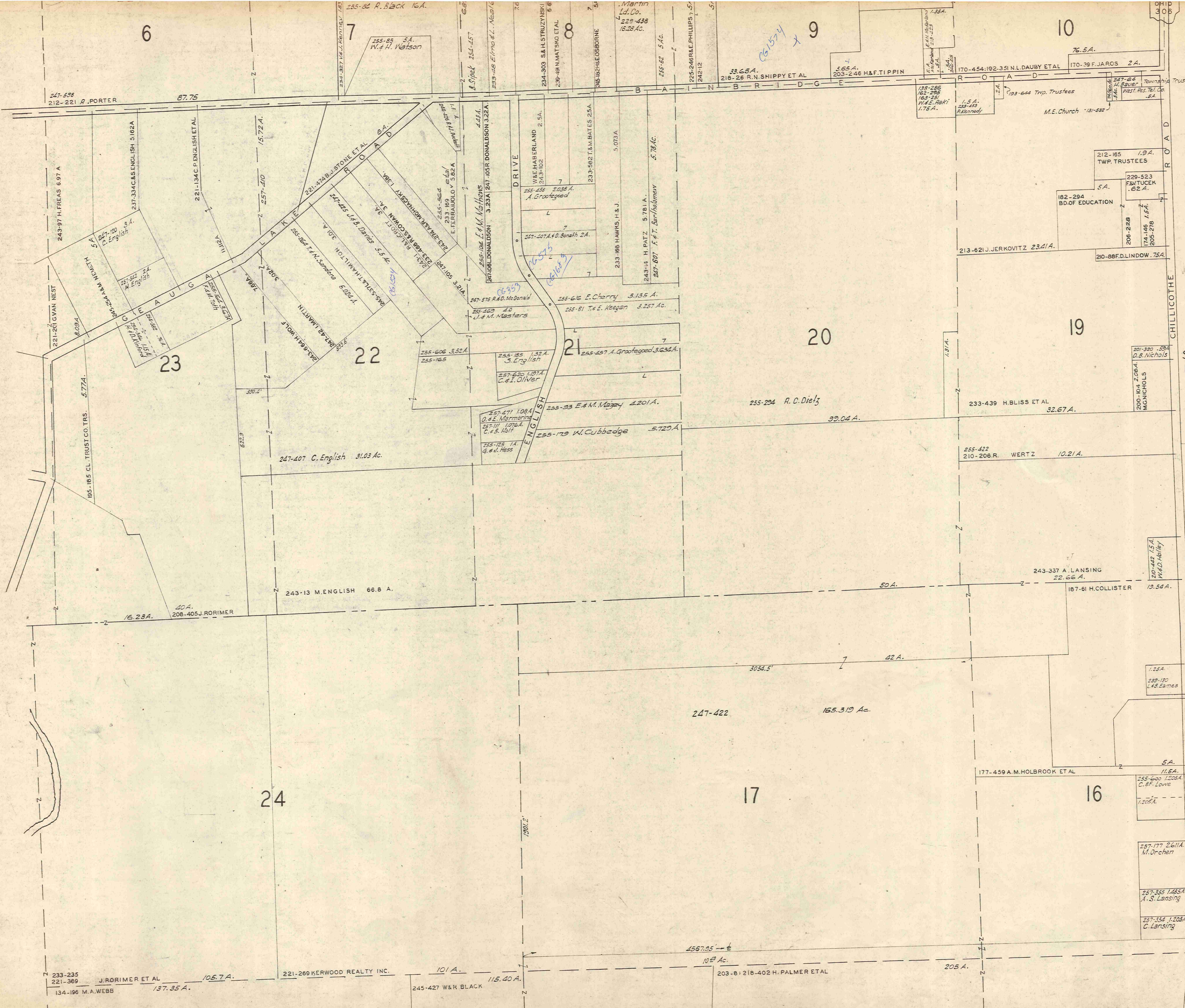
6.68A.
189-103A SZOKA ET AL

138-211 4A.
109-403

9.72A.

16.02A.



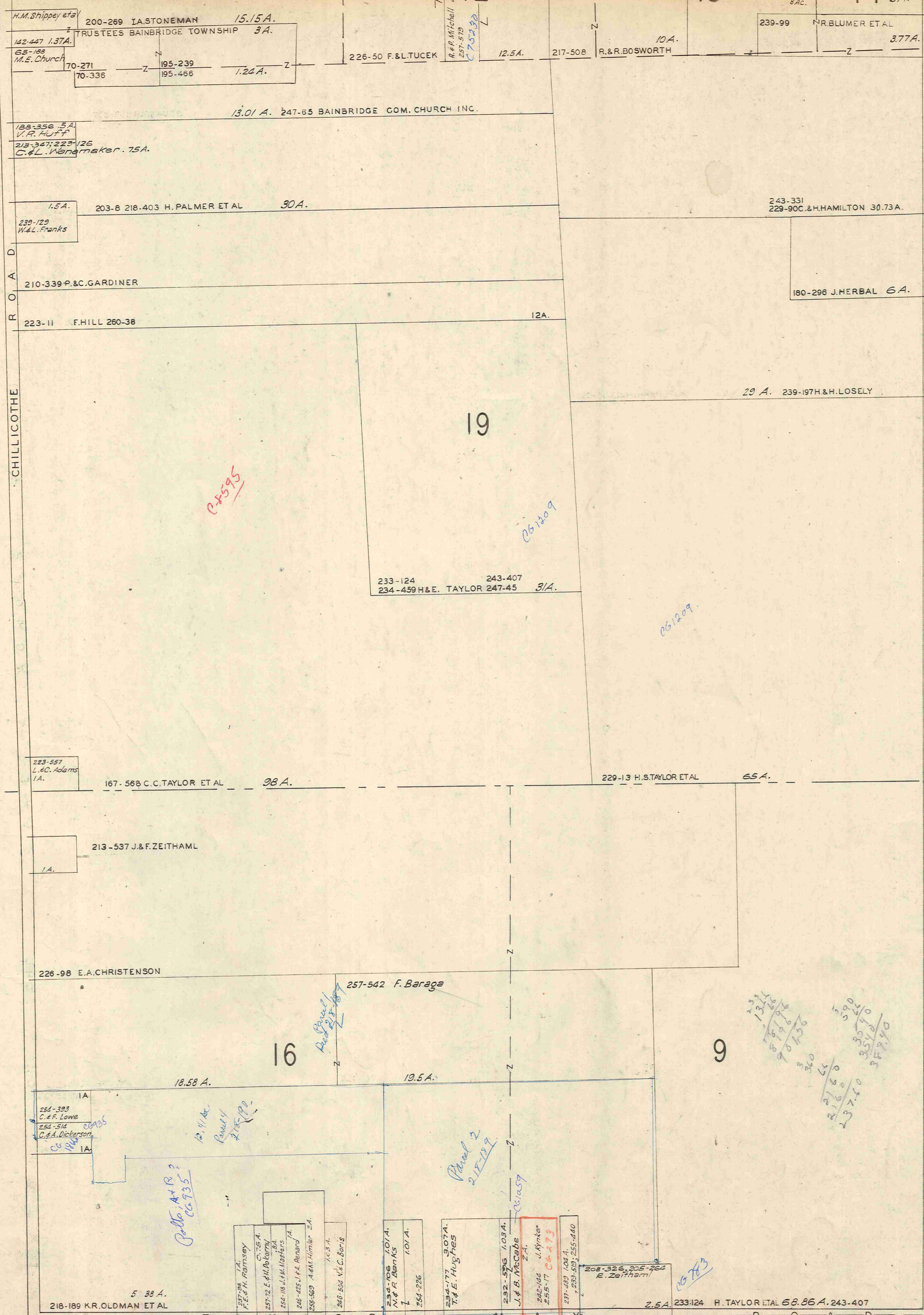


SCALE 1"=300'
MAR. 1, 1954

TR. TWO
TR. THREE

A	B	C	D
E	F	G	H
I	J	K	L
M	N	O	P

BAINBRIDGE - J



SCALE 1"=300'
MAR. 1, 1954

TRACT TWO

TRACT THREE

190.16
245.44
935.60

16.60
97.60
109.20

14.72
85.32
97.52

13.26
81.96
97.12

13.14
81.86
95.00
360
237.10
358.90

A	B	C	D
E	F	G	H
I	J	K	L
M	N	O	P

BAINBRIDGE - K

167-464 V. COLLINS ET AL 12.11 A. 232-404 A. & T. MCLAREN 21 A.
 257-329 M. & H. TOMASIN 9.708 A.
 254-303 H. & E. SHIENKARUK 9.68 A.
 252-176 H. & B. JAMES 9.685 A.
 8.427 A. A. 247-50 C. MINER 206-237 W. & L. GREENE 12.5 A.

53.18 A. 248-122 G. & F. GOCKEL
 19

169-103 A. SZOKA ET AL 78 A.

109-403 L. HURD 37.46 A.

247-171
205-185 W. HOWARD 11.5 A.

229-1415 H. S. TAYLOR

110 A.
257-513, 516 G. & E. THOMAS 5.05 A.

174-419 L. A. TAYLOR 30 A.

20.94 A.

257-513, 514 J. & F. STOVENS 20 A.

257-513, 515 M. & M. HATCH 25 A.

210-341 A. KLUCHER 41.06 A.

237-522 S. & B. BREGMAN 20 A.

15 A. 247-123+24

9
247-441 E. LINNERT 7.58 A.
247-441 J. WEEKS 6 A.

247-63 WISCHAUER ET AL 254-352 2.5 A.
06/1/86
247-353; 247-63 R. & B. ARMSTRONG 2.5 A.

257-27 E. L. & A. DEVINE 5 A.
C. H. W. S.
257-29, 30 D. & A. NEWTON

233-124; 247-48

243-407; 247-45 O. CARNES

42 A. L. A. TAYLOR ET AL 81.96 A.

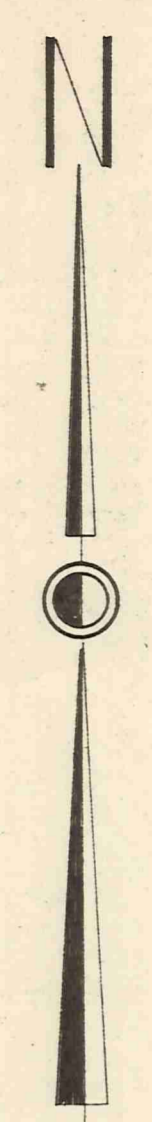
220-568 S. SZOKA JR. 30.08 A.

245-342 J. CARLETON 12 A.

10 A. 237-363 15 A. C. H. TAYLOR
 210-84 M. & A. CHIRIA 40 A.
 205-596 78 A.

224-548 H. W. TAYLOR 5 A.

226-213 S. REMIAS ET AL 17.44 A. 217-372 O. R. PILNY ET AL 106 A.



SCALE 1"=300'
MAR. 1, 1954

T O W N S H I P
A U B U R N

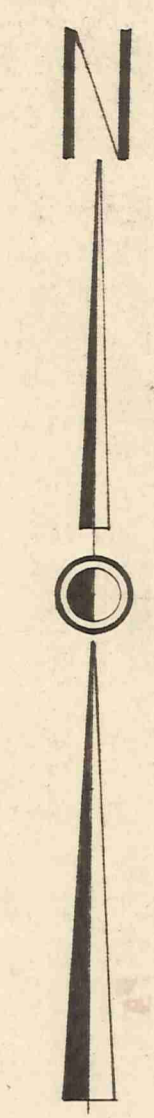
TRACT TWO
TRACT THREE

A	B	C	D
E	F	G	H
I	J	K	L
M	N	O	P

BAINBRIDGE - L

65 90 4 2

06/16/53

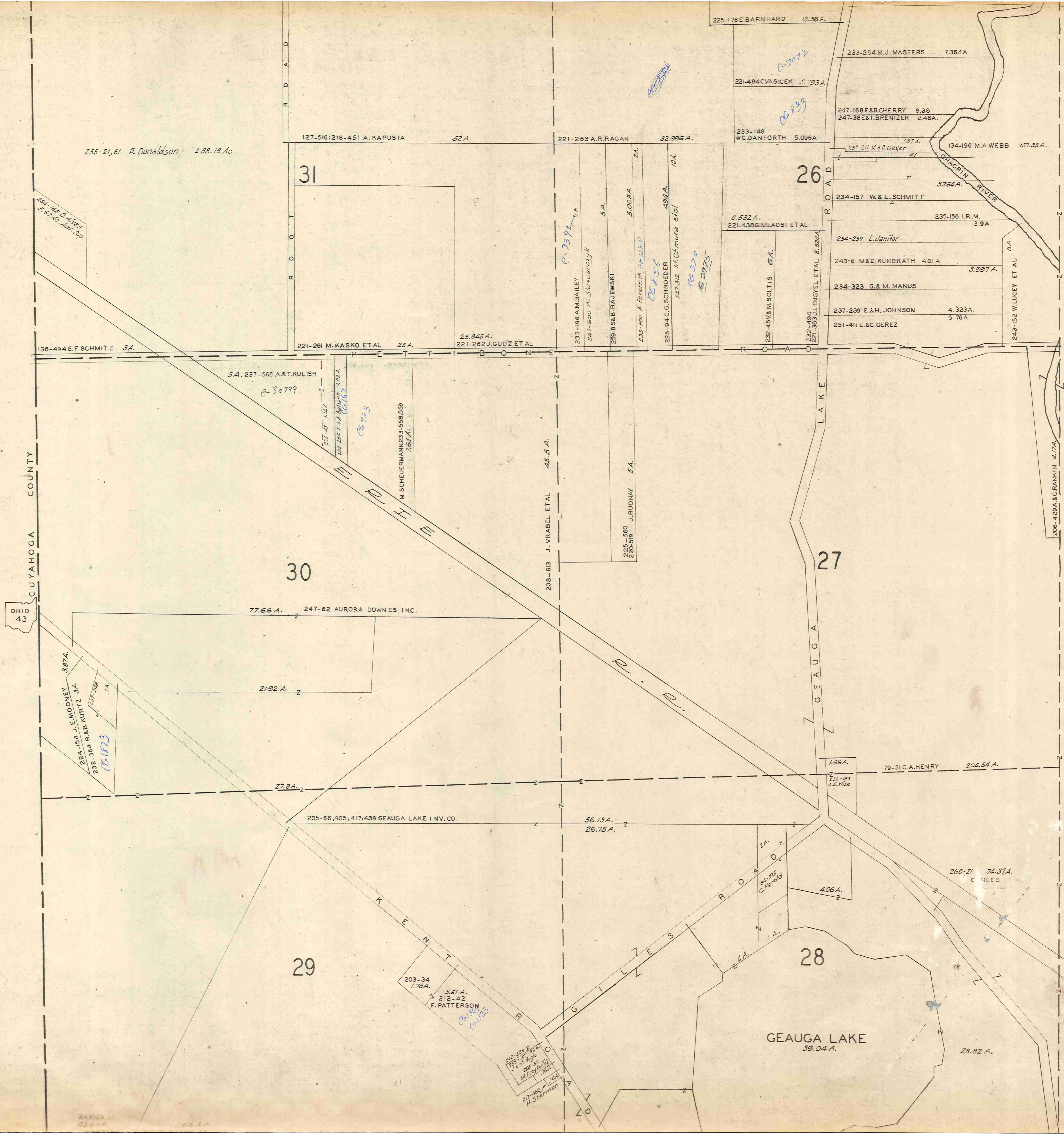


SCALE 1"=300'
MAR. 1, 1954

TRACT THREE

A	B	C	D
E	F	G	H
I	J	K	L
M	N	O	P

BAINBRIDGE - M



CUYAHOGA COUNTY

OHIO 43

255-21, 61 D. Donaldson 188.18 Ac.

31

26

30

27

29

28

GEAUGA LAKE
59.04 A.

CHAGRIN RIVER

GEAUGA LAKE

KENT ROAD

LAKESIDE ROAD

GEAUGA LAKE ROAD

127-516; 218-451 A. KAPUSTA 52 A.

221-263 A. R. RAGAN 32.296 A.

233-149 W.C. DANFORTH 5.096 A.

233-254 M.J. MASTERS 7.364 A.

247-168 E.B. CHERRY 8.36 A.

247-36 E.I. BRENZER 2.46 A.

251-211 M.R. Geyer 1.67 A.

134-196 M.A. WEBB 137.35 A.

234-157 W. & L. SCHMITT 3.254 A.

235-156 I.R.M. 3.9 A.

254-250 L. Jenitor

243-6 M & E. KUNDRATH 4.01 A.

234-323 G. & M. MANUS 3.997 A.

237-239 E. & H. JOHNSON 4.323 A.

251-411 E. & C. GEREZ 5.76 A.

243-152 W. LUCEY ET AL 8 A.

136-494 E.F. SCHMITZ 3 A.

221-261 M. KASKO ET AL 25 A.

221-262 J. GUDZ ET AL 25.845 A.

5 A. 237-566 A. & T. KULISH

C-30799

7.52-48 1.124 A.

242-298 F.P.A. BARNES 122 A.

C-167

C-723

M. SCHEUERMAN 233-558, 559 7.66 A.

208-813 J. VRABEL ET AL 45.5 A.

225-560 220-519 J. RUDNAY 5 A.

77.66 A. 247-62 AURORA DOWNES INC.

21.92 A.

27.9 A.

205-66, 405, 417, 439 GEAUGA LAKE INV. CO.

56.13 A. 26.75 A.

1.66 A.

232-183 A.E. WISE

179-31 C.A. HENRY

206.54 A.

203-34 1.76 A.

5.61 A. 212-42 F. PATTERSON

C-30725

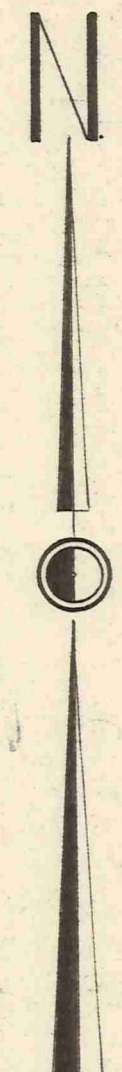
C-30723

227-328 F. J. K. BERRY

228-311 M. FRYLICKI

217-266 J. J. H. SHERMAN

CHILLICOTHE R O A D



SCALE 1" = 300'
MAR. 1, 1954

TR. THREE

23

18

15

22

19

14

20

13

21

243-152
W. LUCEY ET AL

142-551 H. KELLOGG 9.8 A.

134-196 M. A. WEBB 137.35 A.

245-427 W & R. BLACK 115.4 A.

203-81218-402 H. PALMER ET AL 205 A.

239-163 3.96 A. D. & E. HEIN
246-496 2.50 A. R. & C. Gardiner
251-34 2.09 A. A. & L. Gardiner

251-143 S. EGGLESTON 4.41 A.

239-277 H & E. EGGLESTON 2.91 A.

239-297 E & M. GREAVES 2.91 A.
5.87 A. 239-308 F & C. LAKE

239-164 W & E. NICHOLAS 9.2 A.

193-169 C. J. LAKE 5.88 A.

193-166 F. C. LAKE 3.76 A.

2.79 A. 193-168 H. M. LAKE
237-312 L. W. SMITH 2.11 A.

203-195 J. & M. STEINMETZ 46.206 A.

233-170,444 H. LAKE ET AL 34.5 A.

208-503 F. TAPLIN 182.07 A.

179-31 C. A. HENRY 206.54 A.
260-21 C. GILES ET AL 74.37 A.

210-75 R. L. WEBSTER 7.5 A.

G & R. JOHNSON 125 A.
123-162 L. & E. Benford
195-560 A. R. Hudson

199-30 C. GILES 7.264 A.

243-748 2.64 A.

138-627 MEAD ATH. CLUB

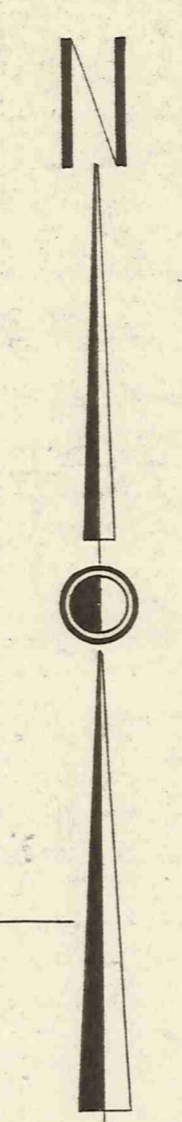
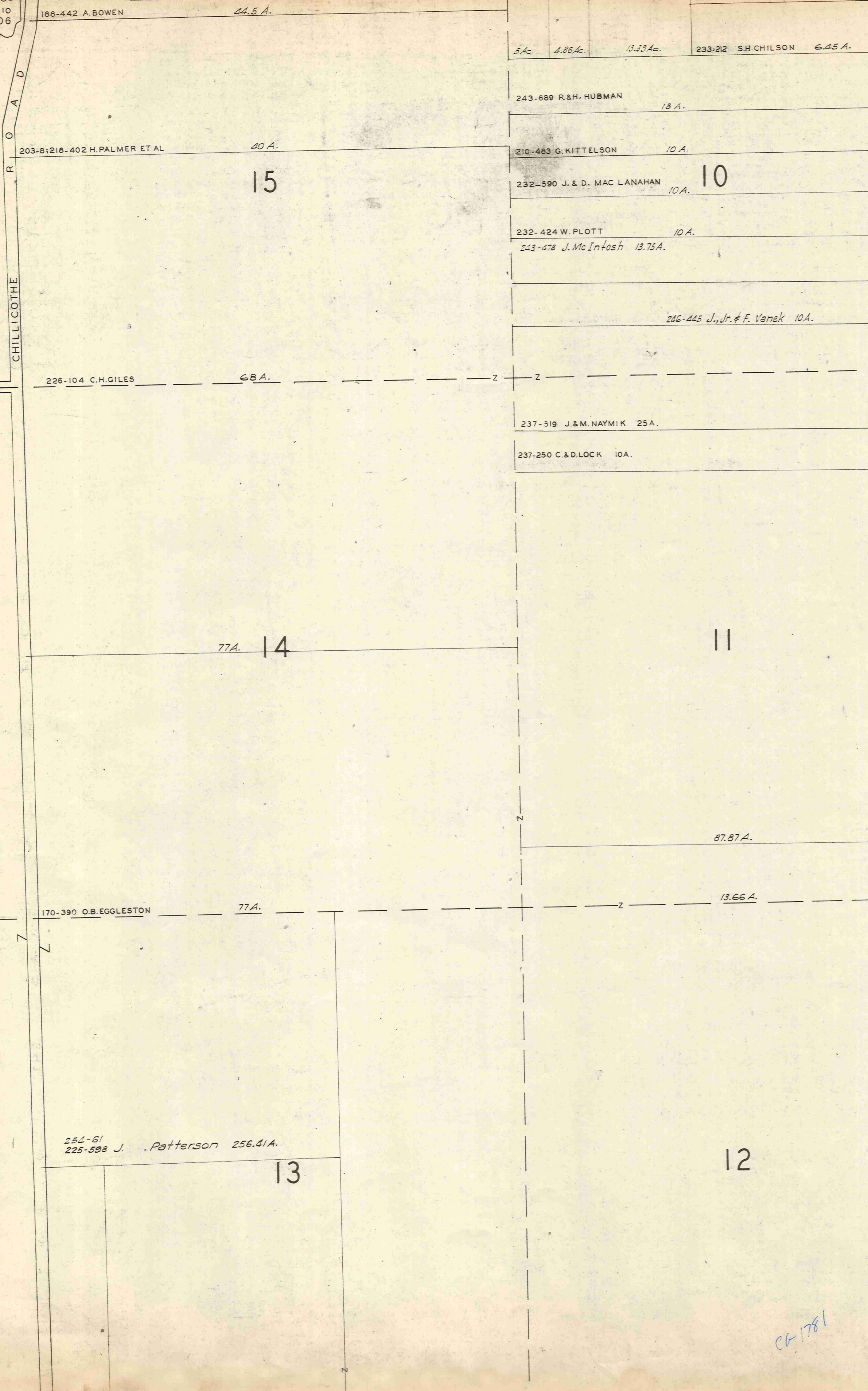
GEA. LAKE INV. CO.

254-61
225-598 J. Patterson 256.41

A	B	C	D
E	F	G	H
I	J	K	L
M	N	O	P

BAINBRIDGE-N

OHIO
306



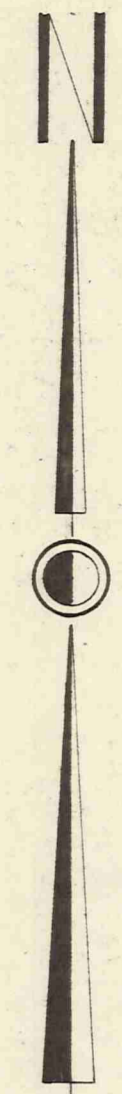
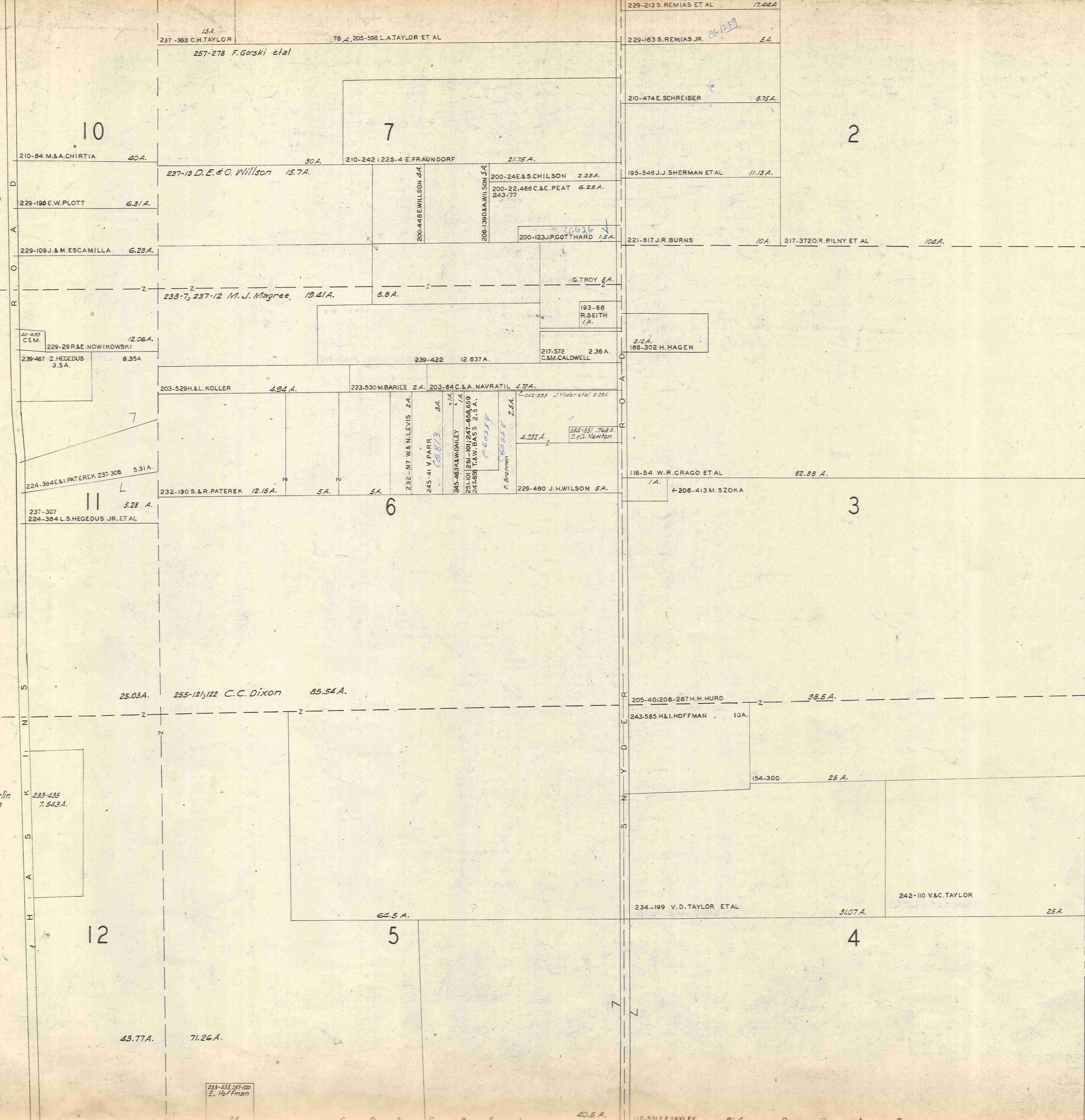
SCALE 1"=300'
MAR. I, 1954

TRACT THREE

A	B	C	D
E	F	G	H
I	J	K	L
M	N	O	P

BAINBRIDGE - 0

CG-1781



SCALE 1"=300'
MAR. 1, 1954

AUBURN TOWNSHIP

TRACT THREE

A	B	C	D
E	F	G	H
I	J	K	L
M	N	O	P

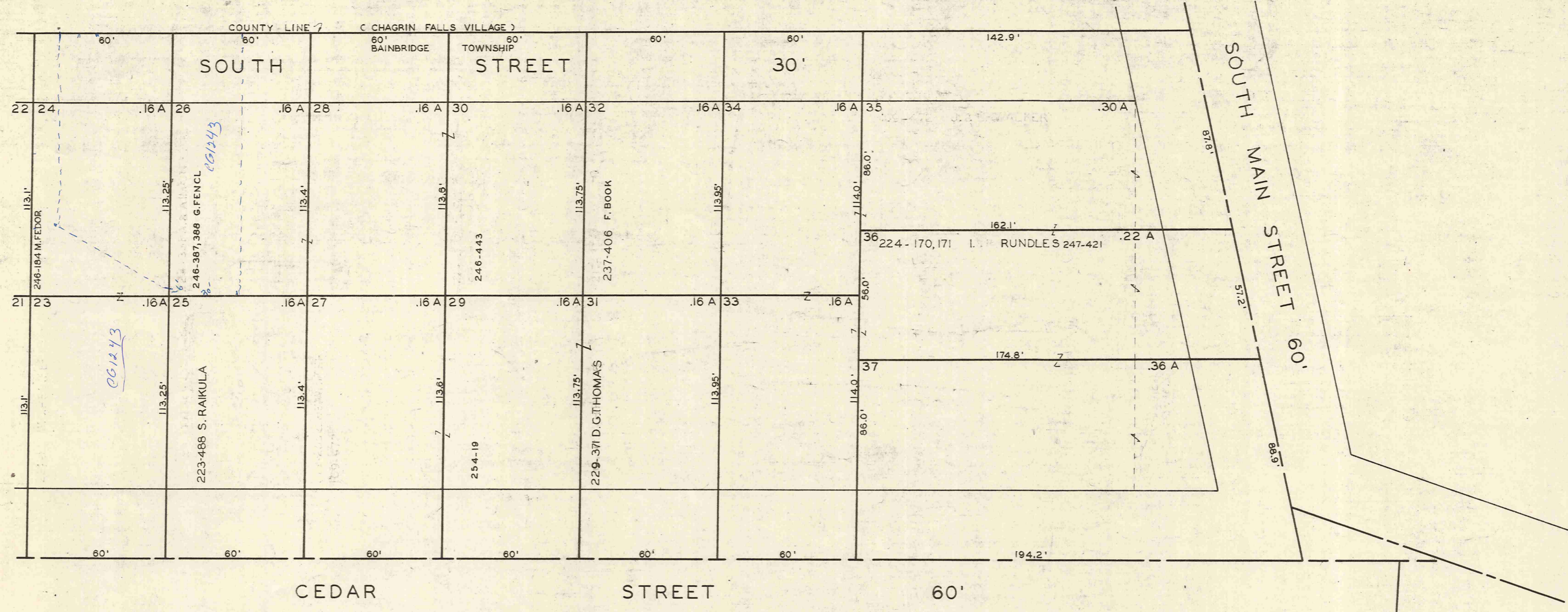
BAINBRIDGE - P

I.E. Chamberlin
257-518

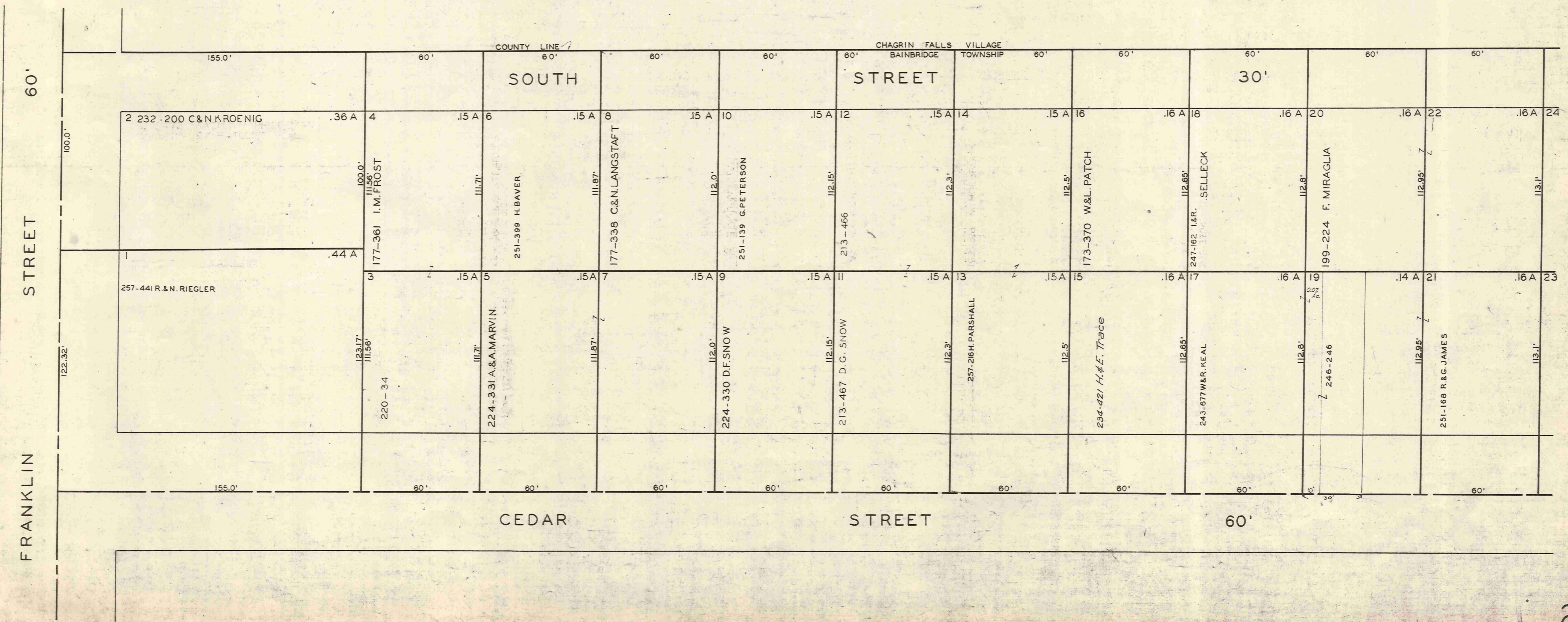
233-235, 257-320
E. Hoffman

112-531 F.E. YAXLEY 3/1 A. R O A D

2 A. C R A C K E L 40.5 A.



SCALE 1"=30'
MAR. 1, 1954





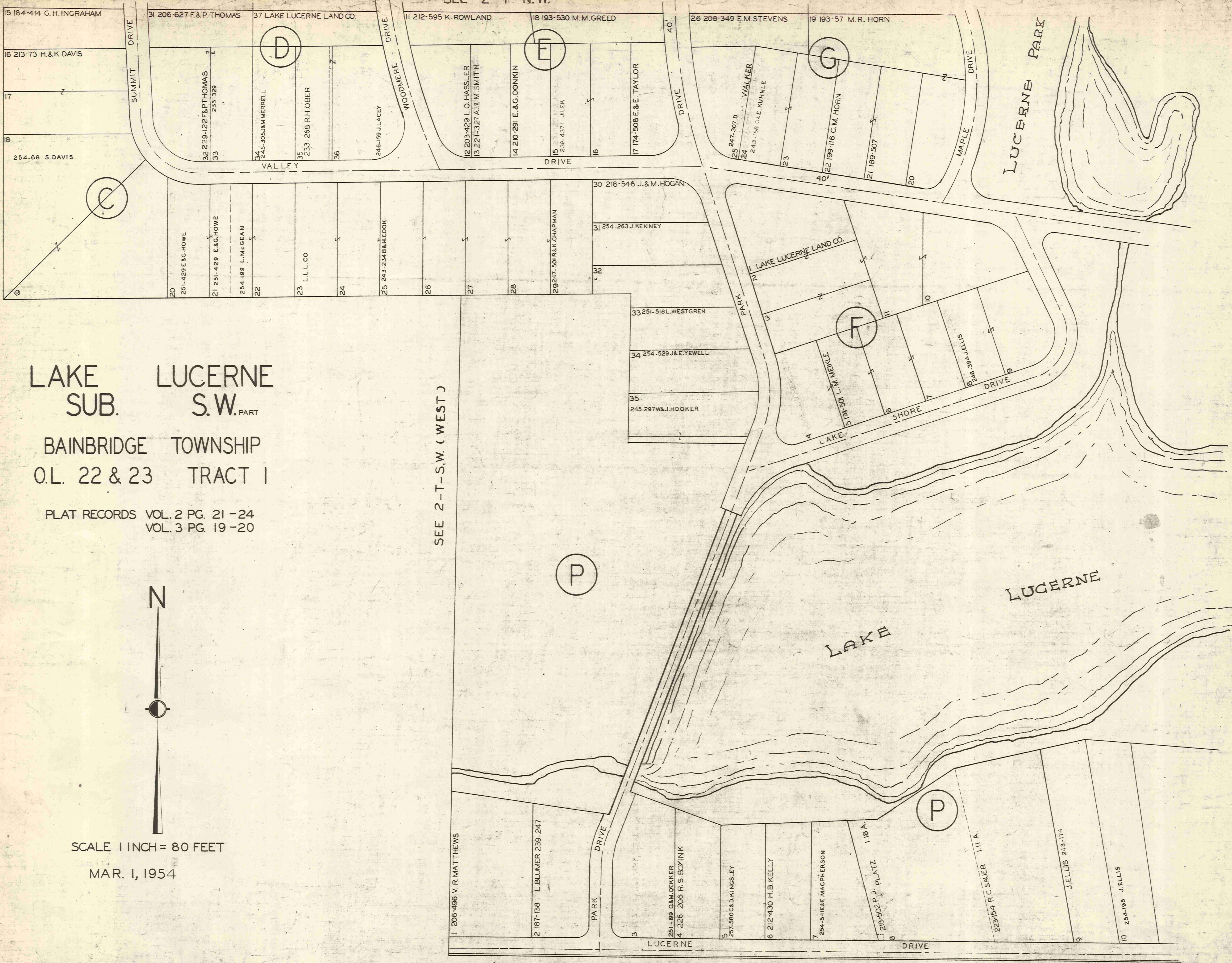
SCALE 1 INCH = 80 FEET
 MAR. 1, 1954
 PLAT RECORDS VOL. 2 PG. 21-24
 VOL. 3 PG. 19, 20

SEE 2-T-N.E.

SEE 2-T-S.W.

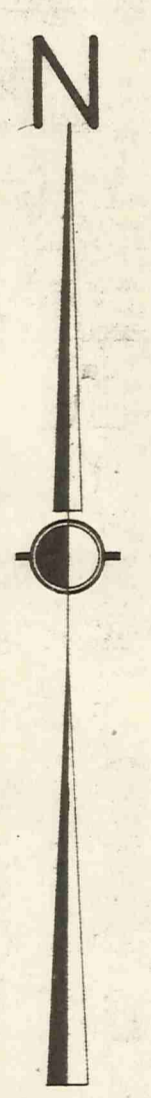
2-T N.W.

SEE 2-T-N.W.



LAKE LUCERNE
SUB. S.W. PART
BAINBRIDGE TOWNSHIP
O.L. 22 & 23 TRACT 1

PLAT RECORDS VOL. 2 PG. 21 - 24
VOL. 3 PG. 19 - 20



SCALE 1 INCH = 80 FEET
MAR. 1, 1954

SEE 2-T-S.W. (WEST)

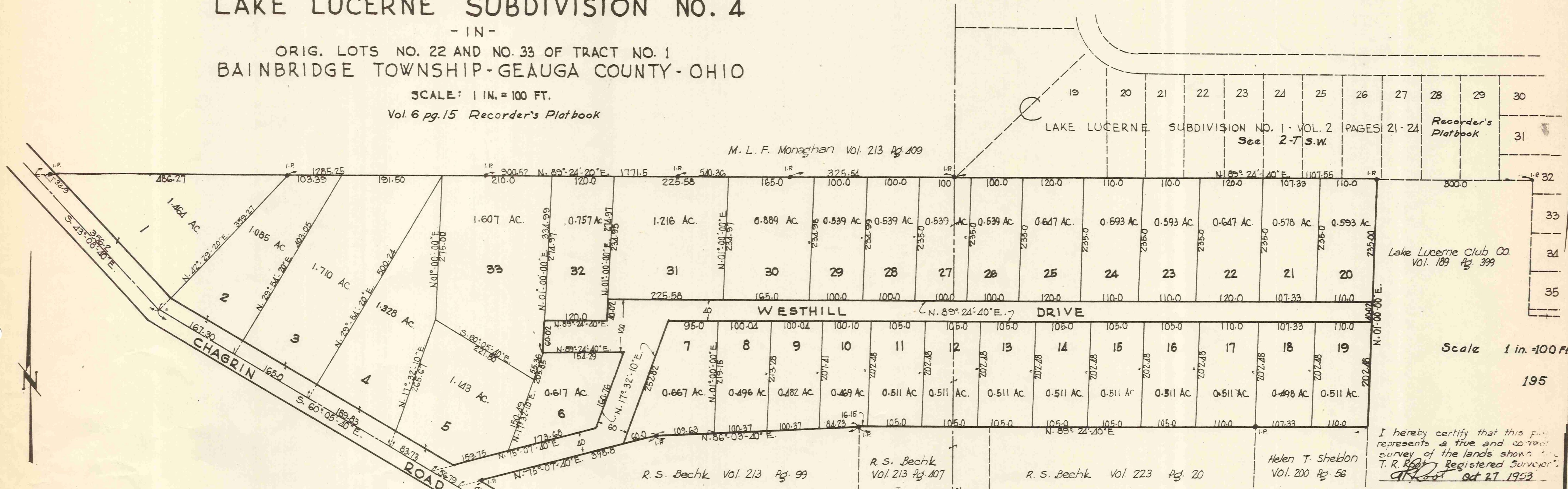
SEE 2-T-S.E.

PLAT OF
LAKE LUCERNE SUBDIVISION NO. 4

- IN -

ORIG. LOTS NO. 22 AND NO. 33 OF TRACT NO. 1
BAINBRIDGE TOWNSHIP - GEauga COUNTY - OHIO

SCALE: 1 IN. = 100 FT.
Vol. 6 pg. 15 Recorder's Platbook



We, the undersigned owners of all the land within this Subdivision, hereby accept and adopt this plat of the same.
Signed at Chagrin Falls, Ohio this 27th day of October, 1953
The Lake Lucerne Land Company (Incorporated), (Deed Record Vol. 225, Pg. 534)
by G.M. Cuddan - President
Helen T. Sheldon - Treas.
Helen T. Sheldon (Deed Record Vol. 200 Pg. 56)

State of Ohio ss. Before me, a Notary Public in and for said County of Cuyahoga County and State, personally appeared the above named T.M. Sheldon, President and Helen T. Sheldon, Treasurer who acknowledged that they did sign the foregoing acceptance, and that the same is the free act and deed of themselves and the Lake Lucerne Land Company. In testimony whereof I have hereunto set my hand and official seal at Chagrin Falls, Ohio this 27th day of October, 1953.
Kathleen Peckel Rochat Notary Public.
My Commission expires March 18, 1956

I hereby certify that the sub-lots shown on this plat are in compliance with the regulations established by zoning authority and in effect Oct. 27, 1953
Fred H. Shaw
ZONING INSPECTOR

APPROVED by Geauga County Health Department

APPROVED by the Board of Commissioners of Geauga County
John A. White Mar 9th, 1953
William H. Miller

THE ROADS SHOWN HEREON ARE NOT INTENDED FOR DEDICATION PURPOSES.

I hereby certify that this plat represents a true and correct survey of the lands shown.
T. R. Ross Registered Surveyor
T. R. Ross Oct 27 1953

Entered for transfer Nov. 9, 1953
Transferred William F. Kram
Auditor of Geauga County

Received for Record Nov. 9, 1953
Recorded Nov. 17, 1953 Vol. 6 Pg. 399
Gaugua County Plat Records.
Ed. H. Halley
Recorder of Geauga County

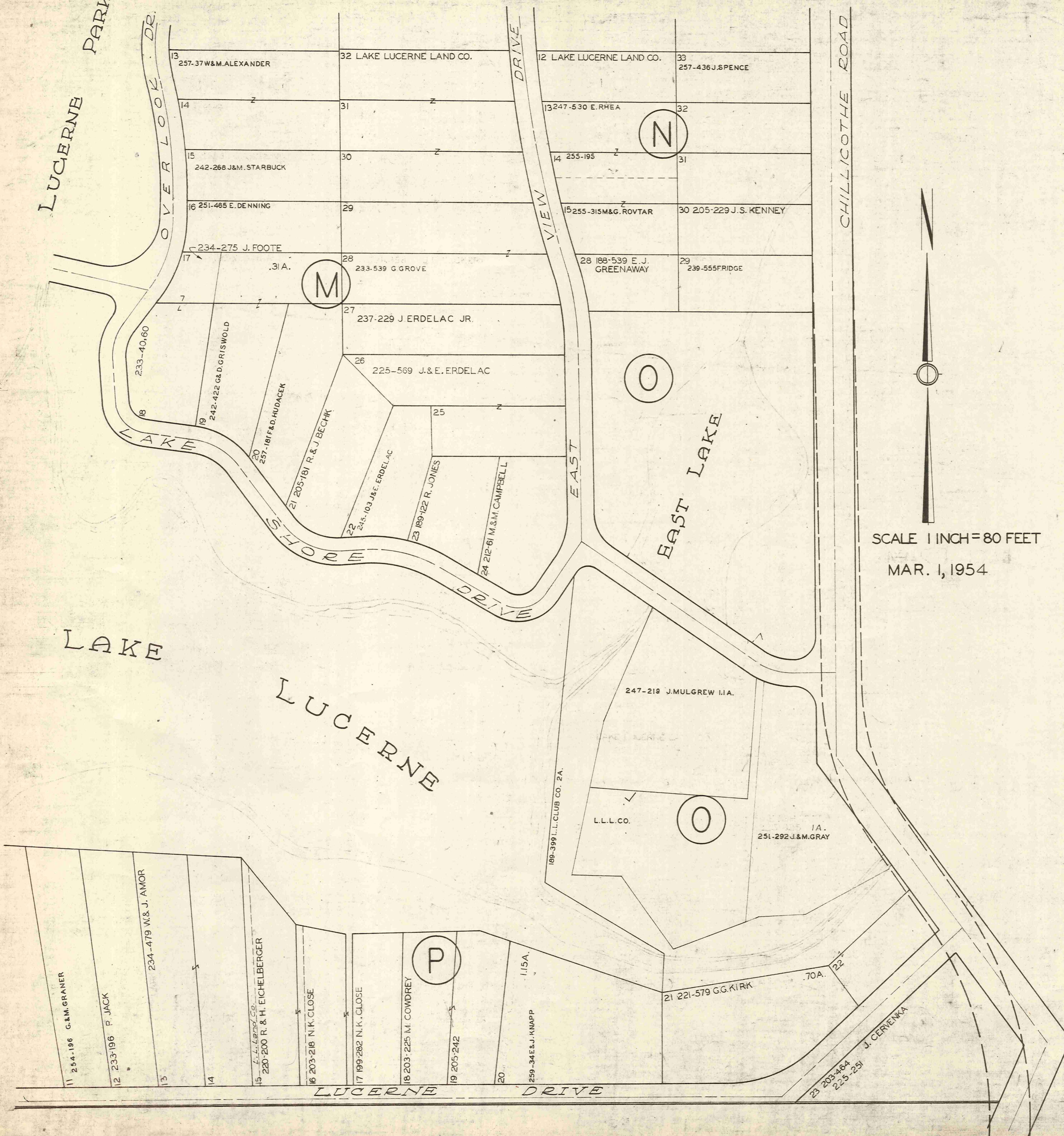
MAR. 1, 1954

Bainbridge
2-T S.W. (West)

SEE 2-T-N.E.

LUCERNE PARK

SEE 2-T-S.W.



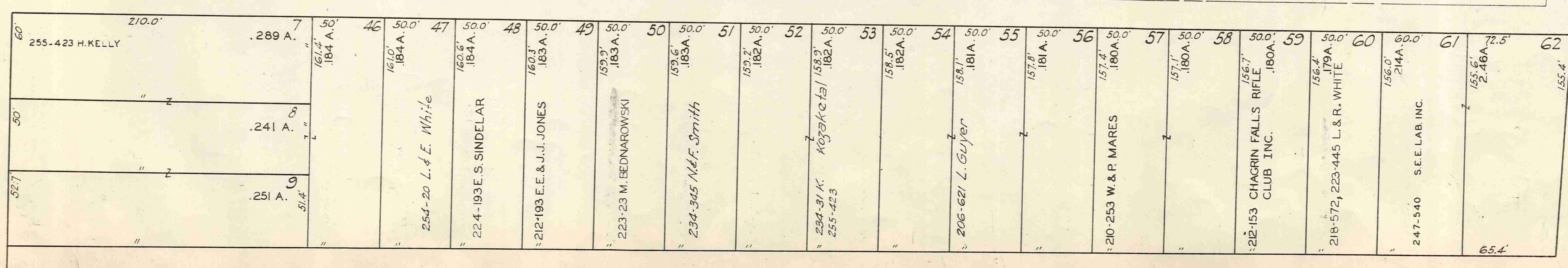
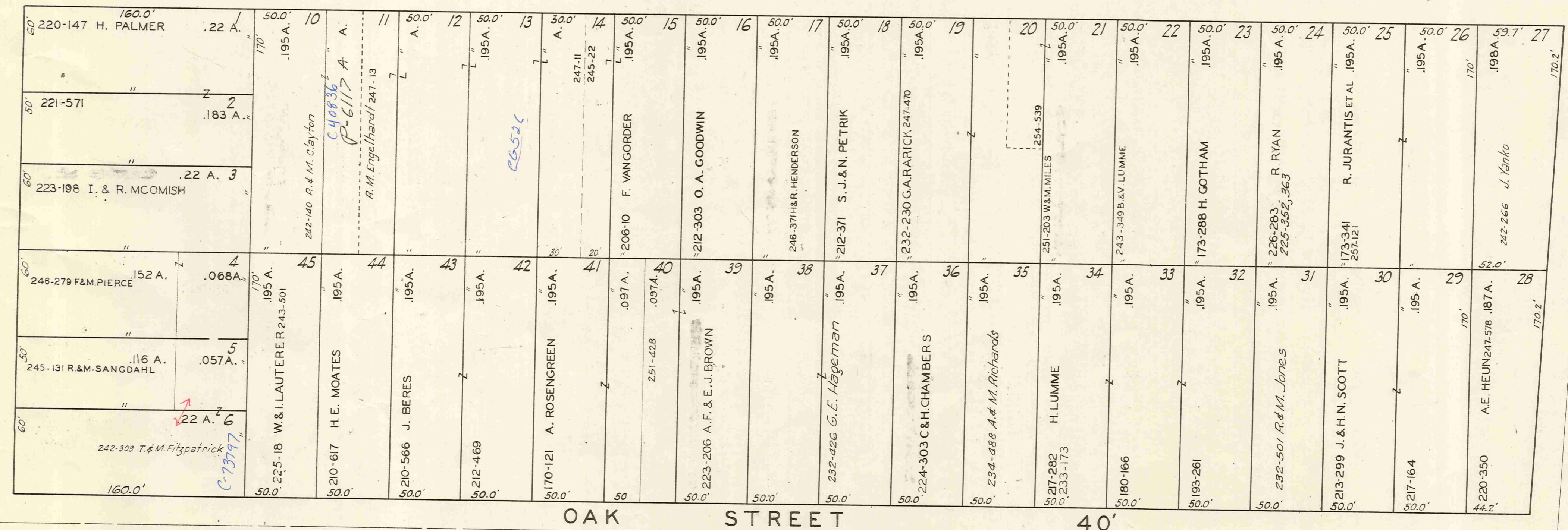
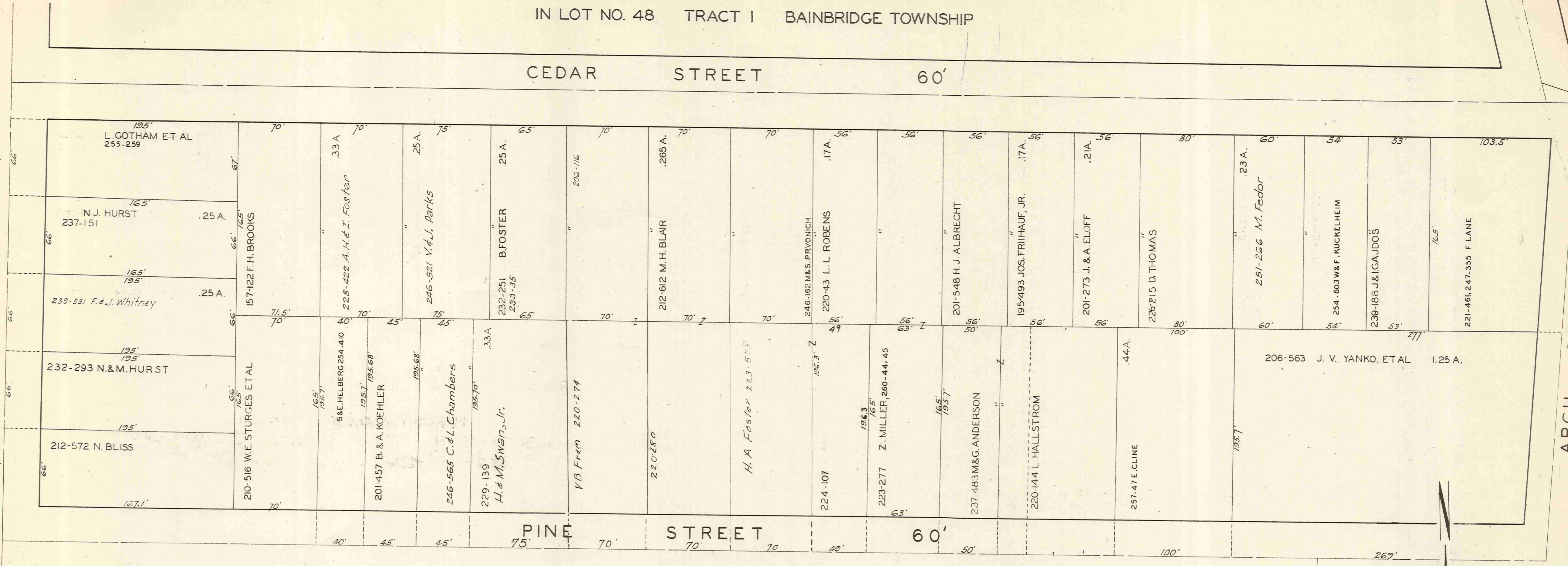
SCALE 1 INCH = 80 FEET
MAR. 1, 1954

2-T_{SE}

CHURCH SUBDIVISION AND LANDS NORTHERLY THEREOF

REC. OF PLATS VOL. 2 PG. 17
IN LOT NO. 48 TRACT I BAINBRIDGE TOWNSHIP

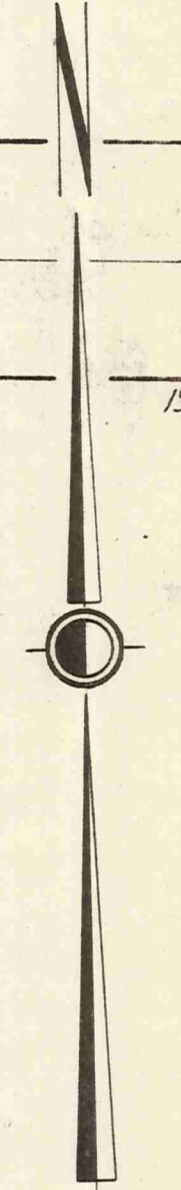
FRANKLIN ROAD



203-371 GENERAL BIOCHEMICALS, INC. 2.44 A.

SCALE 1 INCH=50 FEET
MAR. 1, 1954

NOTE: AREAS OF LANDS IN CHURCH SUBDIVISION SHOWN HEREON WERE COMPUTED BY THE COUNTY ENGINEER.



CHAGRIN FALLS PARK SUBDIVISION

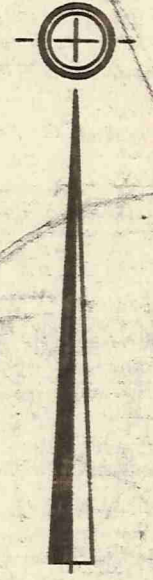
PART OF LOT NO. 47 TRACT I BAINBRIDGE TOWNSHIP

N.W. PART LOTS 1 TO 315, 961 TO 1045, AND 1017A.

REC. OF PLATS VOL. I PAGE 60

SCALE 1 INCH = 50 FEET

MAR. 1, 1954



ROAD

FRANKLIN

2	
3	
4	
5	G. RECTOR
6	S. & M. COGGINS
7	
8	J. GRIMMETT, ETAL
9	76 W. & W. ALI, TR.
10	M. WILLIAMS
11	75 C. & A. WILLIAMS
12	74
13	73
14	72
15	M. WILLIAMS
16	70
17	69 W. & V. THOMAS
18	68
19	E. & R. THOMAS
20	I. M. MARR
21	67
22	66
23	65 A. HORWATH
24	64
25	63 J. ARMSTRONG
26	62
27	61 C. MUEX
28	60
29	59 G. STERLING
30	58 T. CUNNINGHAM
31	57
32	56 W. & A. TUFTS
33	55 R. UNDERWOOD
34	54 A. SLATTON
35	53 M. & R. KOLOM
36	52 M. KOLOM, ETAL
37	51 J. CORNBERG
38	50
39	49 H. HAGLER
40	48
41	47 O. J. PARIS
42	46 S. & C. PULLEY
43	45
44	44 C. D. PEACOCK
45	43

STREET

AKRON

79	A. KRUEGER	102	J. W. BROWN
80		101	
81		100	
82		99	
83	R. THOMAS	98	
84		97	
85		96	
86	H. & J. HARRIS		
87	M. GOOD		
88			
89	E. FRANCE, ETAL		
90			
91			
92			
93			
94			
95			
103			
104			
105			
106	T. THEODORE		
107	P. & E. STOKES		
108			
109	W. GALOWAY		
110		50	
111	L. CREECH	49	E. HUMPHREY ETAL
112		48	E. MCGINNIS
113	J. C. LERCH	47	
114		46	
115	P. & L. PUMAS	45	
116		44	
117	H. HAGLER	43	L. HUFF
118		42	
119	C. CLARK	41	
120		40	
121	W. HUTCHINSON, ETAL	39	
122		38	H. ESCOCITZ
123		37	
124		36	H. W. PARKER
125	J. & F. NICHOLS	35	
126		34	M. & F. GREEN
127	C. BURSE	33	
128		32	
129		31	
130		30	
131		29	
132		28	
133		27	
134		26	
135		25	
136		24	
137		23	
138		22	
139		21	
140		20	
141		19	
142		18	
143		17	
144		16	
145		15	
146		14	
147		13	
148		12	
149		11	
150		10	
151		9	
152		8	
153		7	
154		6	
155		5	
156		4	
157		3	
158		2	
159		1	
160			
161			
162			
163			
164			
165			
166			
167			
168			
169			
170			
171			
172			
173			
174			
175			
176			
177			
178			
179			
180			
181			
182			
183			
184			
185			
186			
187			
188			
189			
190			
191			
192			
193			
194			
195			
196			
197			
198			
199			
200			
201			
202			
203			
204			
205			
206			
207			
208			
209			
210			
211			
212			
213			
214			
215			
216			
217			
218			
219			
220			
221			
222			
223			
224			
225			
226			
227			
228			
229			
230			
231			
232			
233			
234			
235			
236			
237			
238			
239			
240			
241			
242			
243			
244			
245			
246			
247			
248			
249			
250			
251			
252			
253			
254			
255			
256			
257			
258			
259			
260			
261			
262			
263			
264			
265			
266			
267			
268			
269			
270			
271			
272			
273			
274			
275			
276			
277			
278			
279			
280			
281			
282			
283			
284			
285			
286			
287			
288			
289			
290			
291			
292			
293			
294			
295			
296			
297			
298			
299			
300			
301			
302			
303			
304			
305			
306			
307			
308			
309			
310			
311			
312			
313			
314			
315			

WOODLAND

ROCKER AVENUE

STREET

CANTON

BEDFORD

162	J. W. TODD	198	G. & C. ADAMS
163		197	
164	H. CURRY	196	G. ADAMS
165		195	
166	E. & A. LYNCH	194	E. & R. FURGUSON
167		193	
168	N. CRITTENDEN	192	G. & C. ADAMS
169		191	
170	E. & A. LYNCH	190	
171		189	
172		188	
173	A. HUMPHREY	187	W. & C. WILLIAMSON
174		186	
175	J. MILLER	185	
176			
177			
178			
179			
180			
181			
182			
183			
184			
270			
271			
272	W. MORRIS		
273			
274			
275			
276	H. ROBINSON		
277			
278			
279			
280			
281			
282			
283			
284			
285			
286			
287			
288			
289			
290			
291	H. THEODORE		
292			
293	A. NEWBERN		
294			
295			
296			
297			
298			
299			
300			
301	C. BELL		
302			
303	F. HARDY		
304			
305			
306			
307	PHARVEY		
308			
309			
310			
311			
312			
313			
314			
315			
223	E. SPENCER		
224			
225			
226			
227			
228	A. NEWBERN		
229			
230			
231			
232			
233	M. DURR		
234			
235			
236			
237			
238			
239			
240	M. & R. BARKSDALE		
241			
242			
243			
244			
245			
246			
247			
248			
249			
250			
251			
252			
253			
254			
255			
256			
257			
258			
259			
260			
261			
262			
263			
264			
265			
266			
267			
268			
269			
270			
271			
272			
273			
274			
275			
276			
277			
278			
279			
280			
281			
282			
283			
284			
285			
286			
287			
288			
289			
290			
291			
292			
293			
294			
295			
296			
297			
298			
299			
300			
301			
302			
303			
304			
305			
306			
307			
308			
309			
310			
311			
312			
313			
314			
315			

ROAD

DAYTON

WEST

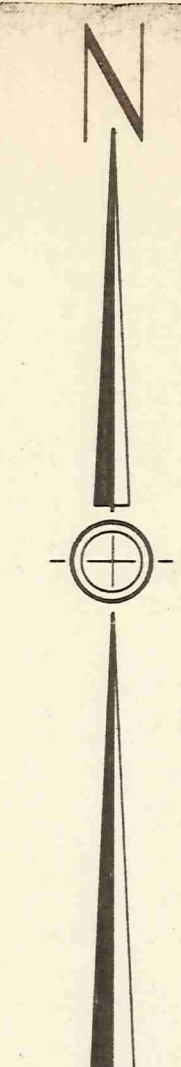
261	A. LACEY	978	
262		977	
263		976	
264		975	M. MCALLISTER
265		974	
266		973	E. NORMAN ETAL
267		972	
268		971	
269		970	
270		969	A. PAYNE
271		968	
272		967	
273		966	R. HUFF
274		965	
275		964	
276		963	
277		962	
278		961	
279			
280			
281			
282			
283			
284	</		

CHAGRIN FALLS PARK SUBDIVISION

PART OF LOT NO. 47 TRACT I BAINBRIDGE TOWNSHIP

N.E. PART LOTS 1046 TO 1386

REC. OF PLATS VOL. I PAGE 60



SCALE 1 INCH = 50 FEET

MAR. 1, 1954

EAST

ROCKER

AVENUE

SEE 2-V-N.W.

STREET

FINDLAY

1077 A. JONES	
1076 B. ROSS	
1075	
1074 E. & M. THOMPSON	
1073	
1072 E. BOSTIC	
1071	
1070 R. & L. MOSLEY	
1069 R. & J. STONE	
1068	
1067 M. FRISON	
1066 W. M. CARR	
1065	
1064	
1063	
1062 M. FRISON	
1061	
1060 H. MOHAMED	
1059	
1058	
1057 H. & C. LUMPKIN	
1056	
1046 W. CALLOWAY	
1047 E. KIRKLEN	
1048 W. DENSON	
1049 W. DENSON	
1050	
1051 P. & L. DUMAS	
1052	
1053 DENNISON & R.	
1054	
1055	

STREET

GENEVA

1139	
1138 W. HILL	
1137	
1136 L. & E. SANDERS	
1135	
1134	
1133	
1132	
1131	
1130	
1129	
1128	
1127	
1126	
1125	
1124	
1123	
1122 O. ROBINSON	
1121	
1120	
1119 E. ROTKIN	
1118	
1108 G. & E. KING	
1109	
1110 L. PERRY	
1111	
1112	
1113	
1114 O. ROBINSON	
1115	
1116	
1117	
11149	
11150 F. BROW	
11151 J. MARSH	
11152	
11153	
11154	
11155 R. GIPSON	
11156	
11157 J. SELLERS	
11158	
11159	
11160	
11161 J. & S. GREEN	
11162	
11163	
11164 S. ELLIOTT	
11165 R. & S. TATUM	
11166	
11167 E. MASON	
11168	
11169	

STREET

HURON

1201 R. HUFF, ETAL	
1200 E. TRUCKER	
1199	
1198 A. NEWBERN	
1197	
1196 H. WEBSTER	
1195	
1194 E. & E. EVANS	
1193	
1192 J. SELLERS	
1191	
1190 A. JACKSON	
1189	
1188 W. JACKSON	
1187	
1186 S. BOLDEN	
1185	
1184	
1183 D. COLLINS	
1182 O. LEWIS	
1181	
1180	
1202	
1203	
1204	
1205	
1206 J. STRICKLAND	
1207	
1208	
1209 S. M. WILSON	
1210	
1211 S. WRIGHT	
1212	
1213 C. & M. ROBERSON	
1214	
1215 F. RINDY	
1216	
1217 A. STAPLES	
1218	
1219 M. GILMORE	
1220	
1221	
1222 C. & A. WALKER	
1223 L. & F. HITCHCOCK	
1224	
1225 T. AKINS	
1226	
1227	
1228 D. & B. COLLINS	
1229	
1230 J. PORTER	
1231	
1232	
1233	
1234 D. & B. COLLINS	
1235	
1236	
1237 L. WILSON JR. ET AL	
1238	
1239	
1240	
1241	

STREET

KENT

1263 A. BECK	
1262 F. & G. BROW	
1261	
1260 T. GRUBBS	
1259	
1258 T. & V. GRUBBS	
1257	
1256 F. & B. TALLY	
1255	
1254 J. ARMSTRONG	
1253	
1252	
1251 C. CH. OF GOD	
1250	
1249	
1248	
1247 N. & A. AKINS	
1246	
1245	
1244	
1243 N. & A. AKINS	
1242	
1264	
1265 R. WOODARD	
1266	
1267	
1268 B. LONGMIRE	
1269 L. & A. WALKER	
1270	
1271	
1272 L. & M. MONTGOMERY	

STREET

LORAIN

1325 R. & S. HALL	
1324	
1323	
1322 R. HALL	
1321	
1320	
1319	
1318 J. GARY	
1317	
1316 R. DAVIS, ETAL	
1315	
1314 M. GREGG	
1313	
1312 A. & F. COCHRAN	
1311	
1310	
1309	
1308 W. & M. YOUNG	
1307	
1306 W. & M. YOUNG	
1305	
1304 G. MCCALL	
1326	
1327	
1328 M. & H. MC MILLEN	
1329	
1330 L. MONTGOMERY, ETAL	
1331	
1332	
1333	
1334	
1335	
1336 A. MONTGOMERY	
1337 L. SHERRELL	
1338	
1339	
1340	
1341	
1342	
1343	
1344 G. RANDOLPH	
1345	
1346 L. HUTCHINE	
1347	
1348	
1349	
1350	
1351 S. WILSON	
1352	
1353	
1354	
1355	

STREET

MEDINA

1382 PARK VIEW SAVINGS & LOAN CO.	
1381 R. ALEXANDER	
1380	
1379	
1378 S. WILSON	
1377	
1376	
1375	
1374	
1373	
1372	
1371	
1370	
1369	
1368	
1367	
1366	
1365	
1364	
1363	
1362	
1361	
1356 J. S. MONTGOMERY	
1357	
1358	
1359	
1360 F. SIMMONS	

WOODLAND

AVENUE

SEE 2-V-S.E.

2-V-N.E.

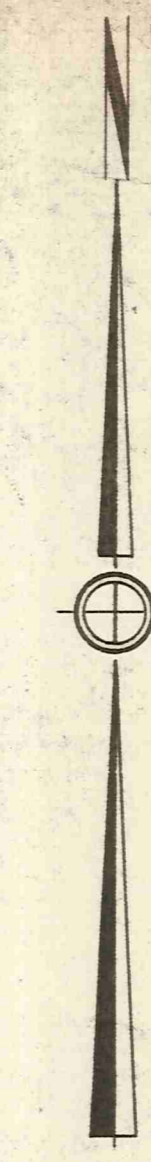
CHAGRIN FALLS PARK SUBDIVISION

PART OF LOT NO. 47 TRACT I BAINBRIDGE TOWNSHIP

S.E. PART LOTS 641 TO 960

REC. OF PLATS VOL. 1 PAGE 60

SEE 2-V-N.E.



SCALE 1 INCH = 50 FEET

MAR. 1, 1954

WOODLAND AVENUE

WOODLAND AVENUE

STREET

FINDLAY STREET

STREET

GENEVA STREET

STREET

HURON STREET

STREET

KENT STREET

STREET

LORAIN STREET

STREET

MEDINA STREET

666	
665 M. & O. ARNOLD	676
664	677
663 J. MOLLOY	678 R. BURCH
662	679
661 J. & E. MALLAY	680
660 D. E. EDWARDS	681 R. & F. SANDERS
659	682
658 E. EDWARDS	683 E. & E. CARTER
657	684
656 A. & M. ROND	685 A. SLOAN
655	686
654 L. & H. WILLIAM J	687
653	688 G. KING
652	689
651 T. CUNNINGHAM	690
650	691 O. ROBINSON
649	692
648 C. & W. JOHNSON	693
647 O. ROBINSON	694
646 P. WATTS	695 G. MCCLENDON, ET AL
645	696
644 O. & L. HEMSLEY	697 C. & M. SUCANON
643	698
642 L. HEMSLEY	699
641	

724 M. STOVALL	
723 E. JORDAN	734 F. HAYES
722	735
721	736
720 R. BOWDEN	737
719 C. SNELLING	738 J. & K. DOWELL
718	739
717 M. SNELLING	740 J. & C. DOWELL
716	741
715	742
714 S. PLANTZNER	743 PENTECOSTAL CHURCH OF CHRIST
713	744
712 A. ROBINSON	745 L
711	746
710	747
709 M. BECK	748 G. & E. KING
708 S. THOMPSON	749 T. ATKINS
707	750
706	751 T. ATKINS
705 G. W. POWERS	752
704	753 S. & W. WILSON
703	754
702	755
701 J. & A. GRAHAM	756 M. ROACH
700	757

782	
781 L. SPEARS	792 L. & J. SPEARS
780	793
779	794 S. WILLIAMS
778	795
777	796 J. SPEARS, ET AL
776	797
775 R. STERN	798
774 J. RUTKIN	799
773	800
772 H. FLINT	801 W. B. BROWN
771 E. WHITE	802
770 V. DOWNING	803
769	804
768	805
767 J. HOWARD	806
766	807
765 E. & M. POUNDS	808 S. & M. BETHEL
764	809
763	810
762	811
761 M. POUNDS	812
760	813 F. BROW
759	814 R. ANTHONY
758	815

840 M. & R. WOODARD	
839 W. PEAVY	850 F. & E. GREENE
838	851
837	852 E. GREENE
836	853
835	854
834 W. & A. PEAVY	855 F. & E. GREEN
833 W. WALKER	856
832	857
831 G. WALKER	858
830	859 S. & R. ANTHONY
829 O. LEWIS	860
828	861 R. GREEN
827 H. & C. GREEN	862 O. DUPREE ET AL
826	863
825 E. DUNCAN	864 R. & S. ANTHONY
824	865
823 F. BROW	866
822	867
821 T. MADDIE	868
820	869
819	870 S. ANTHONY
818 R. ANTHONY	871
817	872 S. & R. ANTHONY
816 F. BROW	873

896 L. BUTLER	
897 E. KIRKLEN	908 F. & J. HALL
896	909
895	910
894 W. & P. CALLOWAY	911
893	912 E. & D. PRICE
892 M. & W. STOVALL	913
891 M. STOVALL	914
890	915
889	916
888	917
887	918
886	919
885	920
884	921
883	922
882	923
881	924
880	925
879	926
878	927
877	928
876 W. STOVALL	929
875	930
874 J. FRANKLIN	931

956 R. & P. JOHNSON	
955 A. & R. HOFFMAN	
954	
953 P. & A. PADEN	
952 R. JONES	
951 P. & A. PADEN	
950	
949	
948 W. & F. ROGERS	
947	
946	
945 L. STONE	
944	
943 L. MONTGOMERY, ET AL	
942	
941	
940 P. HARVEY	
939	
938 G. JOHNSON	
937	
936 G. STONE	
935 O. BORDEN	
934 J. MORRIS	
933 J. & E. MORRIS	
932	

SEE 2-V-S.W.

CHAGRIN FALLS PARK SUBDIVISION

PART OF LOT NO. 47 TRACT I BAINBRIDGE TOWNSHIP

S.W. PART LOTS 316 TO 640
REC. OF PLATS VOL. I PAGE 60



SCALE 1 INCH = 50 FEET

MAR. 1, 1954

SEE 2-V-N.W.

